

TYRE CATALOGUE

Passenger Car, SUV and Light Truck



WEST LAKE



TOP 9
No. 9 of Top 75 Global Tyre Manufacturers

SINCE 1958
Established in Year 1958

30,000 EMPLOYEES
Support from Over 30,000 Employees

200 MARKETS
Trust from Customers Across More than 200 Markets

Zhongce Rubber Group Co., Ltd (ZC-Rubber) is a global tyre company based in Hangzhou, China and was founded in 1958. Over our more than 60 years of history, we experienced continuous growth in quality and reputation to become the Top 10 tyre manufacturer worldwide today.

Our engineers with our international R&D team focus on constant technological development and innovation spending millions of US dollars in research and development each year and upgrading our production and testing facilities. The ET Industrial Brain in the production process promises our smart production and guarantee tyres with high quality, safety, and value with maximum efficiency.

We have formed an extensive global service network of about 1,200 distributors with 250,000 sales locations in 160 countries. Our subsidiaries in Thailand, Germany, Brazil, and the United States serve customers without any difference in time and language. We are dedicated to better support our suppliers, distributors, and customers through a one-stop service.

Safe and Value are always the key of our company. We take pride in the superior quality of our tyre products and the first-rate services. We are still endeavoring to become one of the most respected tyre manufacturers globally and craft a better future with all partners and friends.


Most Advanced Equipment


Best Raw Material


Leanest Management


Latest Technology


Least Energy Consumption


Most Suitable Products

COMPANY MISSION


WE ARE COMMITTED TO ADVANCING TOWARDS FUTURE MOBILITY

COMPANY VISION


TO BE A GLOBAL LEADING TYRE MANUFACTURER



China Compulsory Certification



US DOT Certification



European E-MARK Certification



SNI Certification of Indonesia



BIS Certification of India



INMETRO Certification of Brazil



ZC-Rubber America Inc.

ZC-Rubber Mexico
(Under Planning)



ZC-Rubber Brasil Co. Ltd.



ZC-Rubber Europe Technical Center
ZC-Rubber Europe GmbH



ZC-Rubber Thailand Co. Ltd.

ZC-Rubber Indonesia
(Under Construction)

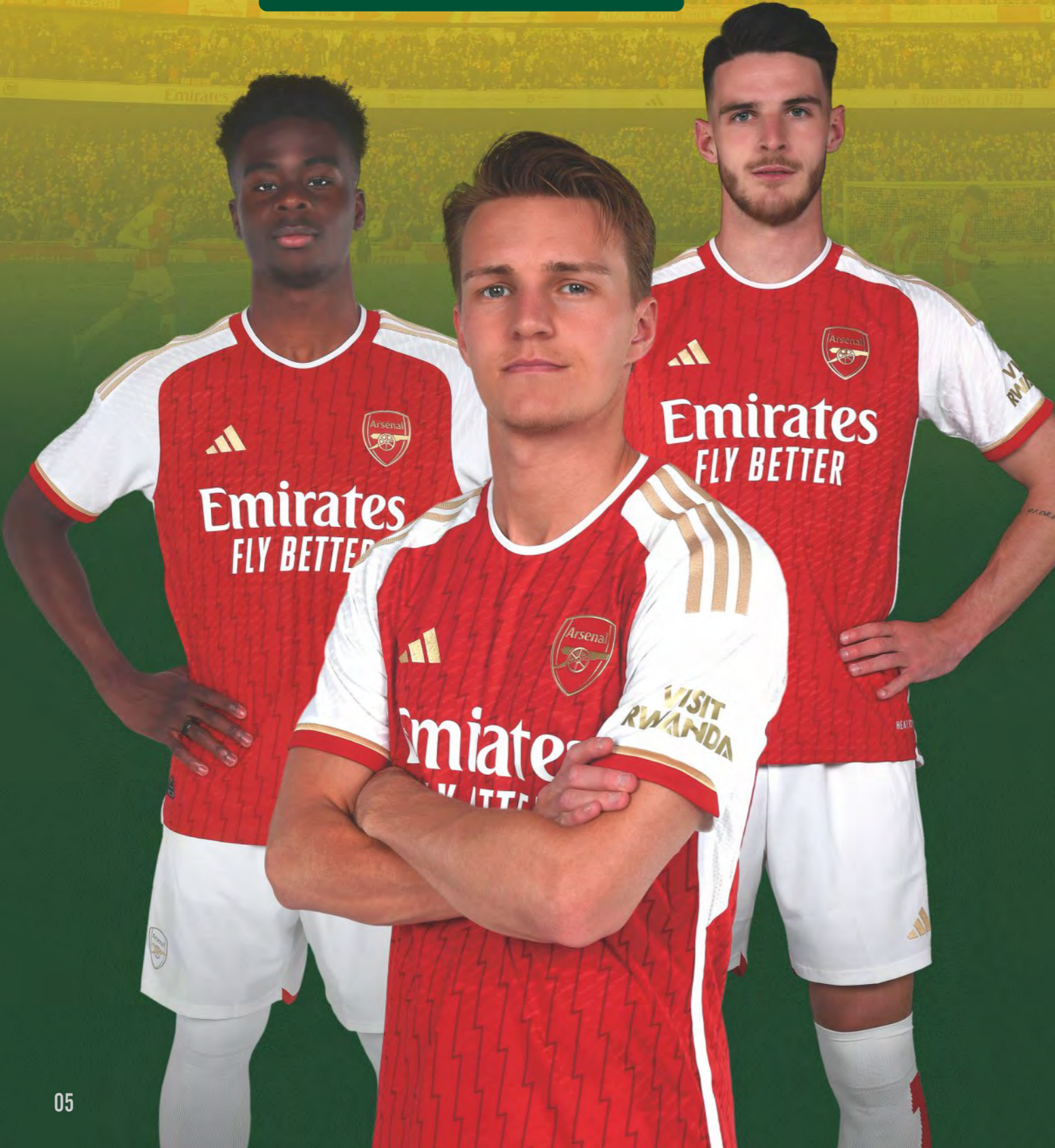


- ZC-Rubber HQ
- ZC-Rubber Tianjin
- ZC-Rubber Chaoyang
- ZC-Rubber Jiande
- ZC-Rubber Qingquan
- ZC-Rubber Yonggu
- ZC-Rubber Anji
- ZC-Rubber Jintan
- ZC-Rubber Recycling Tech. Co. Ltd.
- Hangzhou ZC-Rubber Auto Space Co. Ltd.

WEST LAKE



OFFICIAL TIRE OF ARSENAL FOOTBALL CLUB



OE CUSTOMERS



KEY ACCOUNTS



KEY SUPPLIERS



WEST LAKE CONTENTS

Passenger Car, SUV and Light Truck Tyres

ULTRA HIGH PERFORMANCE (UHP)

RS DS II Z-007(ZRT) Z-007 SA-37 SA-57

09-20

PASSENGER

Z-117 Z-108 RP36

21-26

SUV / LTR

Z-007 Z-203 SU320 SU318 SL369 SL399 SL339 SL366 SL376 SL378 SL386 SL315 SL309

27-52

COMMERCIAL LTR

SC328 SC326 H188 ST313

53-60

WINTER

Z-507 SW608 SW628 SW618 SW612 Z-506 SW606

61-74

TYRE KNOWLEDGE

75-81

SPORT RS



Benefits and Features

- Ideal drifting tyre with special design and components based on competition experiences
- Asymmetric tread design with big pattern blocks and special compound provides superior grip ability
- Continuous center rib generates better grip in dry conditions and enhances high-speed stability



Rim Size	15 - 20
Series	30 - 50
Speed Rating	V - W

SPORT RS

Rim (inch)	Size	Service Index	Standard Rim	Section Width (mm)	Overall Diameter (mm)	Max. Load (kg)	Max. Air Pressure (kPa)	UTQG	TT/TL	Rim (inch)	Size	Service Index	Standard Rim	Section Width (mm)	Overall Diameter (mm)	Max. Load (kg)	Max. Air Pressure (kPa)	UTQG	TT/TL
15"	195/50R15 RS	82V	6.0J	201	577	475	300	240	AA A TL	18"	285/35ZR18 XL RS II	101W	10.0J	290	657	825	350	180/240	AA A TL
	205/50R15 XL RS	89V	6.5J	214	587	580	350	240	AA A TL		225/40ZR18 XL RS	92W	8.0J	230	637	630	350	240	AA A TL
16"	205/45ZR16 XL RS	87W	7.0J	206	590	545	350	240	AA A TL	19"	235/40ZR18 XL RS II	95W	8.5J	241	645	690	350	180/240	AA A TL
	225/50R16 XL RS	96W	7.0J	233	632	710	350	240	AA A TL		275/30ZR19 XL RS	96W	9.5J	278	649	710	350	240	AA A TL
17"	235/40ZR17 RS	90W	8.5J	241	620	600	300	240	AA A TL	20"	235/35ZR19 XL RS	91W	8.5J	241	647	615	350	240	AA A TL
	245/40ZR17 XL RS	95W	8.5J	248	628	690	350	240	AA A TL		285/35ZR19 XL RS	103W	10.0J	290	683	875	350	240	AA A TL
	215/45ZR17 RS	87W	7.0J	213	626	545	300	240	AA A TL		275/35ZR20 XL RS II	102W	9.5J	278	700	850	350	180/240	AA A TL
18"	225/45ZR17 XL RS	94W	7.5J	225	634	670	350	240	AA A TL	20"	285/35ZR20 XL RS II	104W	10.0J	290	708	900	350	180/240	AA A TL
	235/45ZR17 RS	94W	8.0J	236	644	670	300	240	AA A TL		255/40ZR20 XL RS II	101W	9.0J	260	712	825	350	180/240	AA A TL
	265/35ZR18 XL RS II	97W	9.5J	271	643	730	350	180/240	AA A TL										

• Made in China

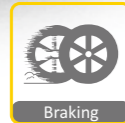


SPORT DS II



Benefits and Features

- Ideal drifting tyre with special design and components based on competition experiences
- Directional pattern design provides outstanding handling and superior grip ability
- Continuous center rib generates better grip in dry conditions and enhances high-speed stability



Rim Size	17 - 18
Series	35 - 45
Speed Rating	W

SPORT DS II

Rim (inch)	Size	Service Index	Standard Rim	Section Width (mm)	Overall Diameter (mm)	Max. Load (kg)	Max. Air Pressure (kpa)	UTQG	TT/TL
17"	• 245/40ZR17 XL	95W	8.5J	248	628	690	350	180 AA A	TL
	• 255/40ZR17 XL	98W	9.0J	260	636	750	350	180 AA A	TL
	• 225/45ZR17 XL	94W	7.5J	225	634	670	350	180 AA A	TL
18"	• 255/35ZR18 XL	94W	9.0J	260	635	670	350	180 AA A	TL
	• 265/35ZR18 XL	97W	9.5J	271	643	730	350	180 AA A	TL
	• 235/40ZR18 XL	95W	8.5J	241	645	690	350	180 AA A	TL

• Made in China

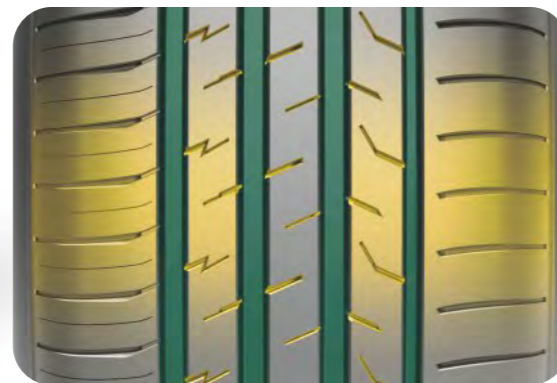


ZuperFlex^{Z-117}



Benefits and Features

- High-performance passenger tyre with superior handling and lower rolling resistance
- Circumferential 4 channel grooves provides excellent wet performance through rapid drainage
- The contact area is widened instantaneously when braking by groove chamfer
- The asymmetric tread with solid outside block enhances cornering capability



Rim Size	13 - 19
Series	45 - 80
Speed Rating	T - W

ZuperFlex^{Z-117}

Rim (inch)	Size	Service Index	Standard Rim	Section Width (mm)	Overall Diameter (mm)	Max. Load (kg)	Max. Air Pressure (kpa)	UTQG	TT/TL
13"	175/70R13	82T	5.0J	177	576	475	300	360 A A	TL
	165/80R13	83T	4.5J	165	594	487	300	360 A A	TL
14"	165/55R14	72V	5.0J	170	538	355	300	360 A A	TL
	185/60R14	82H	5.5J	189	578	475	300	360 A A	TL
	175/65R14	82H	5.0J	177	584	475	300	360 A A	TL
	185/65R14	86H	5.5J	189	596	530	300	360 A A	TL
14"	175/70R14	84T	5.0J	177	602	500	300	360 A A	TL
	185/70R14	88T	5.5J	189	616	560	300	360 A A	TL
	195/70R14	91T	6.0J	201	630	615	300	360 A A	TL
	165/50R15 XL	76V	5.0J	170	547	400	350	360 A A	TL
15"	195/50R15	82V	6.0J	201	577	475	300	360 A A	TL
	185/55R15	82V	6.0J	194	585	475	300	360 A A	TL
	195/55R15	85V	6.0J	201	595	515	300	360 A A	TL
	185/60R15	84H	5.5J	189	603	500	300	360 A A	TL
	195/60R15	88V	6.0J	201	615	560	300	360 A A	TL
	175/65R15	84H	5.0J	177	609	500	300	360 A A	TL
	185/65R15	88H	5.5J	189	621	560	300	360 A A	TL
	195/65R15	91H	6.0J	201	635	615	300	360 A A	TL
	205/65R15	94H	6.0J	209	647	670	300	360 A A	TL
	205/70R15	96H	6.0J	209	669	710	300	360 A A	TL
15"	215/70R15	98H	6.5J	221	683	750	300	360 A A	TL
	225/70R15	100H	6.5J	228	697	800	300	360 A A	TL
	205/45R16 XL	87W	7.0J	206	590	545	350	360 A A	TL
	195/50R16	84V	6.0J	201	602	500	300	360 A A	TL
	205/50R16	87V	6.5J	214	612	545	300	360 A A	TL
	185/55R16	83V	6.0J	194	610	487	300	360 A A	TL
	205/55R16 XL	94W	6.5J	214	632	670	350	360 A A	TL
	205/60R16	92V	6.0J	209	652	630	300	360 A A	TL
	215/60R16 XL	99V	6.5J	221	664	775	350	360 A A	TL
	225/60R16	98H	6.5J	228	676	750	300	360 A A	TL
16"	205/65R16	95H	6.0J	209	672	690	300	360 A A	TL
	215/65R16	98H	6.5J	221	686	750	300	360 A A	TL
	215/70R16	100H	6.5J	221	708	800	300	360 A A	TL
	225/45R18 XL	95W	7.5J	225	659	690	350	360 A A	TL
	235/45R18 XL	98W	8.0J	236	669	750	350	360 A A	TL
	245/45R18 XL	100W	8.0J	243	677	800	350	360 A A	TL
	235/50R18 XL	101V	7.5J	245	683	825	350	360 A A	TL
	235/55R18	100V	7.0J	245	715	800	300	360 A A	TL
	235/60R18 XL	107V	7.0J	240	739	975	350	360 A A	TL
	245/60R18	105H	7.0J	248	751	925	300	360 A A	TL
16"	265/60R18	110V	8.0J	272	775	1060	300	360 A A	TL
	285/60R18	116H	8.5J	292	799	1250	300	360 A A	TL
	265/65R18	114H	8.0J	272	801	1180	300	360 A A	TL
	275/65R18	116H	8.0J	279	815	1250	300	360 A A	TL
	235/55R19 XL	105V	7.5J	245	741	925	350	360 A A	TL

Made in Thailand

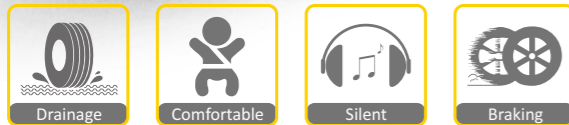
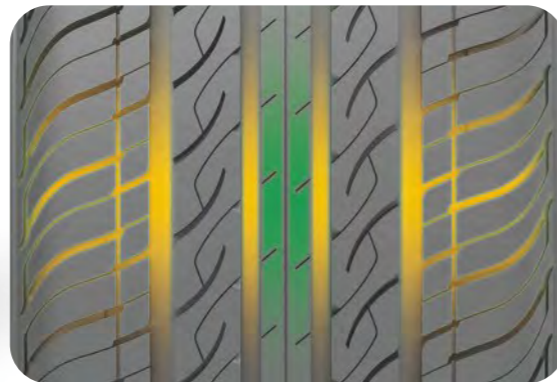


RP36



Benefits and Features

- Variable pitches tread blocks for high stability and reduce noise
- Continuous center rib delivering better straight handling
- Four grooves with open shoulder provides perfect water evacuation



M+S

Rim Size	13 - 16
Series	50 - 70
Speed Rating	T - V

RP36

Rim (inch)	Size	Service Index	Standard Rim	Section Width (mm)	Overall Diameter (mm)	Max. Load (kg)	Max. Air Pressure (kpa)	UTQG	TT/TL	Rim (inch)	Size	Service Index	Standard Rim	Section Width (mm)	Overall Diameter (mm)	Max. Load (kg)	Max. Air Pressure (kpa)	UTQG	TT/TL
13"	155/65R13	73T	4.5B	157	532	365	300	440 A A	TL	15"	185/60R15	84H	5.5J	189	603	500	300	480 A A	TL
	165/65R13	77T	5.0B	170	544	412	300	440 A A	TL		195/60R15	88V	6.0J	201	615	560	300	360 A A	TL
	155/70R13	75T	4.5B	157	548	387	300	440 A A	TL		205/60R15	91H	6.0J	209	627	615	300	480 A A	TL
	165/70R13	79T	5.0B	170	562	437	300	440 A A	TL		185/65R15	88H	5.5J	189	621	560	300	480 A A	TL
	175/70R13	82T	5.0B	177	576	475	300	440 A A	TL		195/65R15	91V	6.0J	201	635	615	300	360 A A	TL
	185/70R13	86T	5.5J	189	590	530	300	480 A A	TL		205/65R15	94H	6.0J	209	647	670	300	480 A A	TL
14"	165/60R14	75H	5.0J	170	554	387	300	440 A A	TL	205/70R15	96H	6.0J	209	669	710	300	480 A A	TL	
	185/60R14	82H	5.5J	189	578	475	300	480 A A	TL	215/70R15	98H	6.5J	221	683	750	300	480 A A	TL	
	195/60R14	86H	6.0J	201	590	530	300	480 A A	TL	195/55R16	87V	6.0J	201	620	545	300	360 A A	TL	
	155/65R14	75T	4.5B	157	558	387	300	440 A A	TL	205/55R16	91V	6.5J	214	632	615	300	360 A A	TL	
	175/65R14	82H	5.0J	177	584	475	300	440 A A	TL	215/55R16	93V	7.0J	226	642	650	300	360 A A	TL	
	185/65R14	86H	5.5J	189	596	530	300	480 A A	TL	195/60R16	89H	6.0J	201	640	580	300	480 A A	TL	
15"	165/70R14	81T	5.0J	170	588	462	300	440 A A	TL	205/60R16	92H	6.0J	209	652	630	300	480 A A	TL	
	175/70R14	84T	5.0J	177	602	500	300	440 A A	TL	215/60R16	95H	6.5J	221	664	690	300	480 A A	TL	
	185/70R14	88T	5.5J	189	616	560	300	480 A A	TL	225/60R16	98H	6.5J	228	676	750	300	480 A A	TL	
	195/70R14	91T	6.0J	201	630	615	300	480 A A	TL	235/60R16	100H	7.0J	240	688	800	300	480 A A	TL	
	195/50R15	82V	6.0J	201	577	475	300	360 A A	TL	205/65R16	95H	6.0J	209	672	690	300	480 A A	TL	
	195/55R15	85V	6.0J	201	595	515	300	360 A A	TL										

Made in China



ZUPERACE Z-007 SUV



Benefits and Features

24 Soundbolt Arrays, and NVH simulation optimized pitch pattern make the silence performance toward the extreme

Scaled grooves with beveled edges, the large continuous pattern block on tyre shoulder, the central continuous pattern rib with shallow groove, and together with the Non Petrochemical renewable green compound rubber, greatly improve the handling and grip performance

BPOT Technology, Hybrid Silane and Mixing-Technology, together with ultra-fine particle size Nano-Silica with high density, provide tyres with better wear resistance and increased mileage while reducing fuel consumption

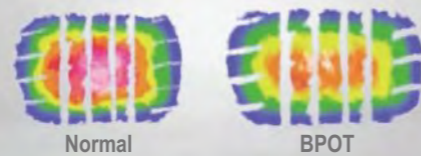
Enhanced Grip

Hybrid Formula™ - Super hybrid rubber compound Fast water drainage and strong grip



Improved Durability

BPOT Technology optimize the footprint and improve durability



Minimized Noise

24 Soundbolt Arrays for minimized noise



ZUPERACE Z-007 SUV

Rim (inch)	Size	Service Index	Standard Rim	Section Width (mm)	Overall Diameter (mm)	Max. Load (kg)	Max. Air Pressure (kpa)	UTQG	TT/TL	Rim (inch)	Size	Service Index	Standard Rim	Section Width (mm)	Overall Diameter (mm)	Max. Load (kg)	Max. Air Pressure (kpa)	UTQG	TT/TL		
17"	215/60R17	96V	6.5J	221	690	710	300	500 A A	TL	18"	265/60R18 XL	114V	8.0J	272	775	1180	350	500 A A	TL		
	225/60R17 XL	103V	6.5J	228	702	875	350	500 A A	TL		285/60R18	116V	8.5J	292	799	1250	300	500 A A	TL		
	235/60R17	102V	7.0J	240	714	850	300	500 A A	TL		235/65R18 EV	106H	7.0J	240	763	950	300	500 A A	TL		
	255/60R17 XL	110V	7.5J	260	738	1060	350	500 A A	TL		265/65R18	114T	8.0J	272	801	1180	300	500 A A	TL		
	215/65R17 EV	99V	6.5J	221	712	775	300	500 A A	TL		19"	265/50R19 XL	110V	8.5J	277	749	1060	350	500 A A	TL	
	225/65R17 XL	106V	6.5J	228	724	950	350	500 A A	TL			275/50R19 XL	112V	8.5J	284	759	1120	350	500 A A	TL	
	235/65R17 XL	108V	7.0J	240	738	1000	350	500 A A	TL			275/55R19	111V	8.5J	284	785	1090	300	500 A A	TL	
	245/65R17	107H	7.0J	248	750	975	300	500 A A	TL			235/60R19 XL EV	107V	7.0J	240	765	975	350	500 A A	TL	
	265/65R17	112H	8.0J	272	776	1120	300	500 A A	TL			255/60R19 XL	113V	7.5J	260	789	1150	350	500 A A	TL	
	275/65R17	115H	8.0J	279	790	1215	300	500 A A	TL			235/65R19 XL	109V	7.0J	240	789	1030	350	500 A A	TL	
285/65R17	116H	8.5J	292	802	1250	300	500 A A	TL	20"	265/50R20 XL		111V	8.5J	277	774	1090	350	500 A A	TL		
215/70R17	101H	6.5J	221	734	825	300	500 A A	TL		285/50R20		112V	9.0J	297	794	1120	300	500 A A	TL		
18"	225/60R18	100H	6.5J	228	727	800	300	500 A A		TL		275/55R20 XL	117V	8.5J	284	810	1285	350	500 A A	TL	
	235/60R18 XL EV	107V	7.0J	240	739	975	350	500 A A		TL		21"	275/50R21 XL	113V	8.5J	284	809	1150	350	500 A A	TL
	245/60R18	105H	7.0J	248	751	925	300	500 A A		TL	22"		275/50R22	111H	8.5J	284	835	1090	300	500 A A	TL
	255/60R18 XL	112V	7.5J	260	763	1120	350	500 A A		TL											

● Made in China EV EV Ready



Hybrid Formula
(Enhanced Grip)



BPOT Technology
(Improved Durability)



Soundbolt Array
(Minimized Noise)



Rim Size	17 - 22
Series	50 - 70
Speed Rating	T - V

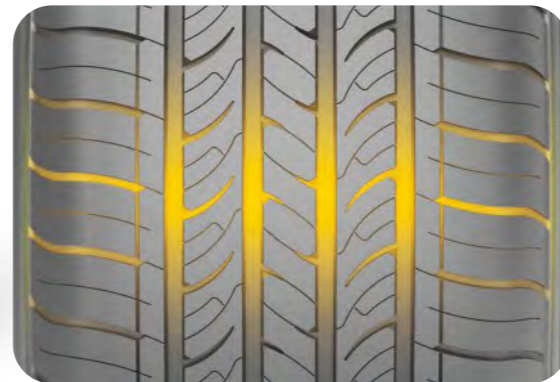


ZUPER TREK Z-203



Benefits and Features

- Optimized casing construction ensure a comfort ride
- Four straight tread grooves guarantee excellent water drainage
- Multi siping design provides outstanding traction on various road surface
- Improved footprint promises less fuel consumption and remarkable tyre life



Rim Size	16 - 22
Series	35 - 70
Speed Rating	H - Y

ZUPER TREK Z-203

Rim (inch)	Size	Service Index	Standard Rim	Section Width (mm)	Overall Diameter (mm)	Max. Load (kg)	Max. Air Pressure (kpa)	UTQG	TT/TL	Rim (inch)	Size	Service Index	Standard Rim	Section Width (mm)	Overall Diameter (mm)	Max. Load (kg)	Max. Air Pressure (kpa)	UTQG	TT/TL
16"	215/70R16	100H	6.5J	221	708	800	300	400 A A	TL	18"	235/65R18	106H	7.0J	240	763	950	300	400 A A	TL
	225/70R16	103H	6.5J	228	722	875	300	400 A A	TL		265/65R18	114H	8.0J	272	801	1180	300	400 A A	TL
	235/70R16	106H	7.0J	240	736	950	300	400 A A	TL		275/65R18	116H	8.0J	279	815	1250	300	400 A A	TL
	245/70R16 XL	111H	7.0J	248	750	1090	350	400 A A	TL		255/70R18	113H	7.5J	260	815	1150	300	400 A A	TL
	265/70R16	112H	8.0J	272	778	1120	300	400 A A	TL		265/70R18	116H	8.0J	272	829	1250	300	400 A A	TL
	275/70R16	114H	8.0J	279	792	1180	300	400 A A	TL		19"	255/50R19 XL	107V	8.0J	265	739	975	350	400 A A
17"	225/60R17	99H	6.5J	228	702	775	300	400 A A	TL	235/55R19 XL		105V	7.5J	245	741	925	350	400 A A	TL
	225/65R17	102H	6.5J	228	724	850	300	400 A A	TL	255/55R19 XL		111V	8.0J	265	763	1090	350	400 A A	TL
	235/65R17 XL	108H	7.0J	240	738	1000	350	400 A A	TL	265/55R19	109V	8.5J	277	775	1030	300	400 A A	TL	
	245/65R17	107H	7.0J	248	750	975	300	400 A A	TL	20"	315/35R20 XL	110Y	11.0J	320	728	1060	350	400 A A	TL
	265/65R17	112H	8.0J	272	776	1120	300	400 A A	TL		275/40R20 XL	106Y	9.5J	278	728	950	350	400 A A	TL
	275/65R17	115H	8.0J	279	790	1215	300	400 A A	TL		255/50R20 XL	109V	8.0J	265	764	1030	350	400 A A	TL
18"	285/65R17	116H	8.5J	292	802	1250	300	400 A A	TL	265/50R20 XL	111V	8.5J	277	774	1090	350	400 A A	TL	
	245/70R17	110H	7.0J	248	776	1060	300	400 A A	TL	285/50R20	112H	9.0J	297	794	1120	300	400 A A	TL	
	265/70R17	115H	8.0J	272	804	1215	300	400 A A	TL	255/55R20 XL	110V	8.0J	265	788	1060	350	400 A A	TL	
	235/50R18	101V	7.5J	245	693	825	350	400 A A	TL	265/55R20 XL	113V	8.5J	277	800	1150	350	400 A A	TL	
	235/55R18	100H	7.5J	245	715	800	300	400 A A	TL	275/55R20 XL	117V	8.5J	284	810	1285	350	400 A A	TL	
	225/60R18	100H	6.5J	228	727	800	300	400 A A	TL	275/60R20	115H	8.0J	279	838	1215	300	400 A A	TL	
	235/60R18	103H	7.0J	240	739	875	300	400 A A	TL	21"	275/50R21 XL	113V	8.5J	284	809	1150	350	400 A A	TL
	245/60R18	105H	7.0J	248	751	925	300	400 A A	TL		22"	275/40R22	107W	9.5J	278	779	975	350	400 A A
	255/60R18	112V	7.5J	260	763	1120	350	400 A A	TL	285/45R22		110H	9.5J	285	815	1060	300	400 A A	TL
	265/60R18	110V	8.0J	272	775	1060	300	400 A A	TL	275/50R22		111H	8.5J	284	835	1090	300	400 A A	TL
285/60R18	116H	8.5J	292	799	1250	300	400 A A	TL											

● Made in China

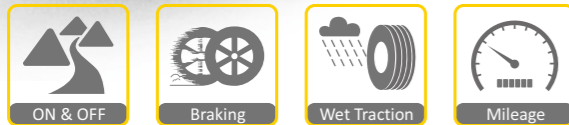


RUGGED LEGEND SL339



Benefits and Features

- Optimized tread design with wide tread large block and variable pitch pattern
- Two-wide circumferential zigzag grooves and Center cross pattern grooves with stone ejectors Provide superb off-road traction throughout the tyre's wear life with stone ejectors to help prevent stone drilling
- Aggressive sidewall design offer customization with a distinct look on each side of the tyre
- Open shoulder design and wide lateral grooves ensure excellent driving performance of the tyre



M+S

Rim Size	15 - 20
Series	50 - 85
Speed Rating	Q - T

RUGGED LEGEND SL339

Rim (inch)	Size	Service Index	Standard Rim	Section Width (mm)	Overall Diameter (mm)	Max. Load (kg)	Max. Air Pressure (kpa)	UTQG	TT/TL	Rim (inch)	Size	LR/PR	Service Index	Standard Rim	Section Width (mm)	Overall Diameter (mm)	Max. Load (kg)	Max. Air Pressure (kpa)	TT/TL
15"	235/75R15	109S	6.5J	235	733	1030	350	500 A A	TL	15"	LT215/75R15	D/8PR	106/103Q	6.0J	223	719	950/875	450	TL
16"	245/70R16 XL	111S	7.0J	248	750	1090	350	500 A A	TL	16"	LT235/75R15	D/8PR	110/107Q	6.5J	733	739	1060/975	450	TL
	255/70R16	111T	7.5J	260	764	1090	300	500 A A	TL		31x10.50R15LT	C/6PR	109Q	8.5J	268	775	1030	350	TL
	265/70R16	112S	8.0J	272	778	1120	300	500 A A	TL		33x12.50R15LT	C/6PR	108Q	10.0J	318	826	1000	250	TL
	275/70R16	114S	8.0J	279	792	1180	300	500 A A	TL	16"	LT245/70R16	E/10PR	118/115Q	7.0J	248	750	1320/1215	550	TL
17"	245/65R17	107S	7.0J	248	750	975	300	500 A A	TL	16"	LT265/70R16	E/10PR	121/118Q	8.0J	272	778	1450/1320	550	TL
	265/65R17	112S	8.0J	272	776	1120	300	500 A A	TL		LT245/75R16	E/10PR	120/116Q	7.0J	248	774	1380/1260	550	TL
18"	265/60R18	110T	8.0J	272	775	1060	300	500 A A	TL		LT265/75R16	E/10PR	123/120Q	7.5J	267	804	1550/1400	450	TL
	285/60R18	116T	8.5J	292	799	1250	300	500 A A	TL		LT285/75R16	E/10PR	126/123Q	8.0J	286	834	1700/1550	550	TL
	265/65R18	114T	8.0J	272	801	1180	300	500 A A	TL		LT235/85R16	E/10PR	120/116Q	6.5J	235	806	1380/1260	550	TL
20"	265/50R20 XL	111T	8.5J	277	774	1090	350	500 A A	TL	17"	LT265/65R17	E/10PR	120/117Q	8.0J	272	776	1400/1285	550	TL
	275/55R20 XL	117T	8.5J	284	810	1285	350	500 A A	TL		LT245/70R17	E/10PR	119/116Q	7.0J	248	776	1360/1250	550	TL
											LT265/70R17	E/10PR	123/120Q	8.0J	272	804	1550/1400	550	TL
											LT285/70R17	E/10PR	126/123Q	8.5J	292	832	1700/1550	550	TL
											LT285/65R17	E/10PR	121/118Q	8.5J	292	802	1450/1320	550	TL

Made in Thailand



MUD LEGEND SL376



Benefits and Features

- New generation premium tyres designed for unpaved tough road (professional off-road tyre)
- Aggressive and open shoulder design provides extreme grips for various terrains
- Stone rejectors protect the tyre casing and minimize stone drilling for long-lasting off-road experience



M+S

Rim Size	15 - 26
Series	55 - 85
Speed Rating	Q - R

MUD LEGEND SL376

Rim (inch)	Size	LR/PR	Service Index	Standard Rim	Section Width (mm)	Overall Diameter (mm)	Max. Load (kg)	Max. Air Pressure (kpa)	TT/TL
15"	30×9.50R15LT	C/6PR	104Q	7.5J	240	756	900	350	TL
	31×10.50R15LT	C/6PR	109Q	8.5J	268	781	1030	350	TL
	32×11.50R15LT	C/6PR	113Q	9.0J	290	807	1150	350	TL
	33×12.50R15LT	C/6PR	108Q	10.0J	318	832	1000	250	TL
	35×12.50R15LT	C/6PR	113Q	10.0J	318	883	1150	250	TL
16"	LT235/75R15	C/6PR	104/101Q	6.5J	235	739	900/825	350	TL
	LT245/75R16	E/10PR	120/116Q	7.0J	248	780	1380/1260	550	TL
	LT265/75R16	E/10PR	123/120Q	7.5J	267	810	1550/1400	550	TL
	LT285/75R16	E/10PR	126/123Q	8.0J	286	840	1700/1550	550	TL
	LT315/75R16	E/10PR	127/124R	8.5J	313	878	1750/1600	450	TL
17"	LT235/85R16	E/10PR	120/116Q	6.5J	235	812	1380/1260	550	TL
	35×12.50R17LT	E/10PR	125Q	10.0J	318	883	1650	450	TL
	LT265/70R17	E/10PR	123/120Q	8.0J	272	810	1550/1400	550	TL
	LT285/70R17	E/10PR	126/123Q	8.5J	292	832	1700/1550	550	TL
	18"	LT245/75R17	E/10PR	121/118Q	7.0J	248	806	1450/1320	550
LT255/75R17		C/6PR	111/108Q	7.0J	255	820	1000/1090	350	TL
LT235/80R17		E/10PR	120/117Q	6.5J	235	814	1285/1400	550	TL
35×12.50R18LT		E/10PR	123Q	10.0J	318	883	1550	450	TL
LT275/65R18		E/10PR	123/120Q	8.0J	279	821	1400/1550	550	TL
20"	LT275/70R18	E/10PR	125/122Q	8.0J	279	849	1500/1650	550	TL
	35×12.50R20LT	E/10PR	121Q	10.0J	318	883	1450	450	TL
	LT305/55R20	F/12PR	125/122Q	9.5J	316	850	1500/1650	550	TL
	LT275/65R20	E/10PR	126/123Q	8.0J	279	872	1550/1700	550	TL
	22"	35×12.50R22LT	F/12PR	121Q	10.0J	318	883	1450	550
37×13.50R22LT		F/12PR	128Q	11.0J	345	934	1800	550	TL
24"	40×15.50R24LT	F/12PR	128Q	12.5J	395	1010	1800	550	TL
26"	40×15.50R26LT	E/10PR	126Q	12.5J	395	1010	1700	450	TL

Made in Thailand

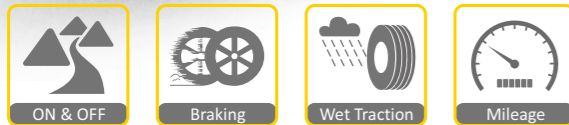


MUD LEGEND SL378



Benefits and Features

- The aggressive tread design is engineered to provide strong biting edges
- The staggered, off-center tread blocks provide increased traction while enhancing road performance
- Built to handle rugged terrains anywhere and to take you on extreme adventures
- Robust shoulder design helps to minimizing cuts



Rim Size	15 - 18
Series	60 - 85
Speed Rating	Q

MUD LEGEND SL378

Rim (inch)	Size	LR/PR	Service Index	Standard Rim	Section Width (mm)	Overall Diameter (mm)	Max. Load (kg)	Max. Air Pressure (kpa)	TT/TL	Rim (inch)	Size	LR/PR	Service Index	Standard Rim	Section Width (mm)	Overall Diameter (mm)	Max. Load (kg)	Max. Air Pressure (kpa)	TT/TL
15"	31x10.50R15LT	C/6PR	109Q	8.5J	268	781	1030	350	TL	16"	LT265/75R16	E/10PR	123/120Q	7.5J	267	810	1550/1400	550	TL
	33x12.50R15LT	C/6PR	108Q	10.0J	318	832	1000	250	TL		LT285/75R16	E/10PR	126/123Q	8.0J	286	840	1700/1550	550	TL
	LT215/75R15	C/6PR	100/97Q	6.0J	216	703	800/730	350	TL		LT235/85R16	E/10PR	120/116Q	6.5J	235	812	1380/1260	550	TL
	LT235/75R15	C/6PR	104/101Q	6.5J	235	739	900/825	350	TL		17"	LT265/65R17	E/10PR	120/117Q	8.0J	272	775	1400/1285	550
LT235/75R15	D/8PR	110/107Q	6.5J	235	739	1060/975	450	TL	LT245/70R17	E/10PR		119/116Q	7.0J	248	776	1360/1250	550	TL	
16"	LT245/70R16	E/10PR	118/115Q	7.0J	248	750	1320/1215	550	TL	LT265/70R17	E/10PR	121/118Q	8.0J	272	810	1450/1320	550	TL	
	LT265/70R16	E/10PR	121/118Q	8.0J	272	784	1450/1320	550	TL	LT285/70R17	E/10PR	121/118Q	8.5J	292	832	1450/1320	550	TL	
	LT245/75R16	E/10PR	120/116Q	7.0J	248	780	1380/1260	550	TL	18"	LT265/60R18	E/10PR	119/116Q	8.0J	272	775	1360/1250	550	TL

Made in China



MUD LEGEND SL386

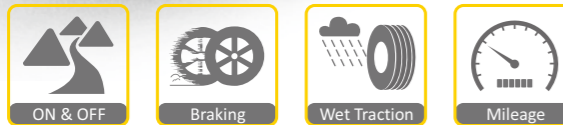


Benefits and Features

Premium tyres designed for unpaved tough road (Professional Off-Road tyres)

3-Plies (available for selected sizes) tyre carcass guarantees outstanding performance on any tough road conditions, especially mud and sand surface

Robust tread blocks promise excellent traction on unpaved roads



M+S

Rim Size	15 - 26
Series	65 - 80
Speed Rating	Q

MUD LEGEND SL386

Rim (inch)	Size	LR/PR	Service Index	Standard Rim	Section Width (mm)	Overall Diameter (mm)	Max. Load (kg)	Max. Air Pressure (kpa)	TT/TL	Rim (inch)	Size	LR/PR	Service Index	Standard Rim	Section Width (mm)	Overall Diameter (mm)	Max. Load (kg)	Max. Air Pressure (kpa)	TT/TL	
15"	31x10.50R15LT	C/6PR	109Q	8.5J	268	781	1030	350	TL	17"	LT235/80R17	E/10PR	120/117Q	6.5J	235	808	1400/1285	550	TL	
	33x12.50R15LT	C/6PR	108Q	10.0J	318	832	1000	250	TL		35x12.50R18LT	F/12PR	128Q	10.0J	318	883	1800	550	TL	
16"	LT265/75R16	E/10PR	123/120Q	7.5J	267	810	1550/1400	550	TL	18"	LT275/65R18	E/10PR	123/120Q	8.0J	279	815	1550/1400	550	TL	
	LT285/75R16	E/10PR	126/123Q	8.0J	286	840	1700/1550	550	TL		33x12.50R20LT	F/12PR	119Q	10.0J	318	832	1360	550	TL	
	LT315/75R16	E/10PR	127/124Q	8.5J	313	878	1750/1600	450	TL		35x12.50R20LT	F/12PR	125Q	10.0J	318	883	1650	550	TL	
17"	35x12.50R17LT	F/12PR	128Q	10.0J	318	883	1800	550	TL	20"	37x12.50R20LT	F/12PR	128Q	10.0J	318	934	1800	550	TL	
	37x12.50R17LT	F/12PR	128Q	10.0J	318	934	1800	550	TL		37x13.50R20LT	F/12PR	128Q	11.0J	345	934	1800	550	TL	
	LT305/65R17	E/10PR	121/118Q	9.0J	311	828	1450/1320	450	TL		35x12.50R22LT	F/12PR	121Q	10.0J	318	883	1450	550	TL	
	LT265/70R17	E/10PR	123/120Q	8.0J	272	804	1550/1400	550	TL		37x13.50R22LT	F/12PR	128Q	11.0J	345	934	1800	550	TL	
22"	LT285/70R17	E/10PR	126/123Q	8.5J	292	832	1700/1550	550	TL	24"	40x15.50R24LT	E/10PR	128Q	12.5J	395	1010	1800	450	TL	
	LT315/70R17	F/12PR	128/125Q	9.5J	323	874	1800/1650	550	TL		26"	40x15.50R26LT	E/10PR	126Q	12.5J	395	1010	1700	450	TL
	LT245/75R17	E/10PR	121/118Q	7.0J	248	800	1450/1320	550	TL											

● Made in China ● Made in Thailand



TRAC LEGEND SL315



Benefits and Features

- 4 Zig-zag grooves and the snow sipes improves all-season performance
- The interblock tie-bar at the centre ribs improve steering response
- Double-ply casing and double steel belts construction guarantee a outstanding load capacity and durability performance



Rim Size	15 - 18
Series	65 - 85
Speed Rating	Q - R

TRAC LEGEND SL315

Rim (inch)	Size	LR/PR	Service Index	Standard Rim	Section Width (mm)	Overall Diameter (mm)	Max. Load (kg)	Max. Air Pressure (kpa)	TT/TL	Rim (inch)	Size	LR/PR	Service Index	Standard Rim	Section Width (mm)	Overall Diameter (mm)	Max. Load (kg)	Max. Air Pressure (kpa)	TT/TL
15"	31x10.50R15LT	C/6PR	109Q	8.5J	268	775	1030	350	TL	16"	LT215/85R16	E/10PR	115/112Q	6.0J	216	772	1215/1120	550	TL
	LT215/75R15	C/6PR	100/97Q	6.0J	216	703	800/730	350	TL		LT235/85R16	E/10PR	120/116Q	6.5J	235	806	1380/1260	550	TL
	LT235/75R15	C/6PR	104/101Q	6.5J	235	733	900/825	350	TL		17"	LT245/70R17	E/10PR	119/116Q	7.0J	248	776	1360/1250	550
16"	185/75R16C	D/8PR	104/102R	5.0J	184	684	900/850	475	TL	LT265/70R17		E/10PR	121/118Q	8.0J	272	804	1450/1320	550	TL
	LT225/75R16	E/10PR	115/112Q	6.0J	223	744	1215/1120	550	TL	LT285/70R17		D/8PR	121/118Q	8.5J	292	832	1450/1320	450	TL
	LT245/75R16	E/10PR	120/116Q	7.0J	248	774	1380/1260	550	TL	LT245/75R17	E/10PR	121/118Q	7.0J	248	800	1450/1320	550	TL	
	LT265/75R16	E/10PR	123/120Q	7.5J	267	804	1550/1400	550	TL	LT235/80R17	E/10PR	120/117Q	6.5J	235	808	1400/1285	550	TL	
LT285/75R16	D/8PR	122/119Q	8.0J	286	834	1500/1360	450	TL	18"	LT275/65R18	E/10PR	123/120Q	8.0J	279	815	1550/1400	550	TL	

● Made in China ● Made in Thailand

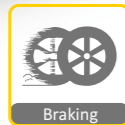


SL309



Benefits and Features

- All-season tread design with long tread life
- Double-ply casing construction handles heavy loads at highway speed and delivers outstanding durability
- Double steel belts plies and double full jointless nylon cap plies improve handling stability and durability
- Wide circumferential grooves helps to evacuate water quickly and efficiently



Rim Size	15 - 18
Series	65 - 85
Speed Rating	Q - R

SL309

Rim (inch)	Size	LR/PR	Service Index	Standard Rim	Section Width (mm)	Overall Diameter (mm)	Max. Load (kg)	Max. Air Pressure (kpa)	TT/TL	Rim (inch)	Size	LR/PR	Service Index	Standard Rim	Section Width (mm)	Overall Diameter (mm)	Max. Load (kg)	Max. Air Pressure (kpa)	TT/TL
15"	31x10.50R15LT	C/6PR	109Q	8.5J	268	775	1030	350	TL	16"	LT215/85R16	E/10PR	115/112Q	6.0J	216	772	1215/1120	550	TL
	LT215/75R15	C/6PR	100/97Q	6.0J	216	703	800/730	350	TL		LT235/85R16	E/10PR	120/116Q	6.5J	235	806	1380/1260	550	TL
	LT235/75R15	C/6PR	104/101Q	6.5J	235	733	900/825	350	TL		17"	LT245/70R17	E/10PR	119/116Q	7.0J	248	776	1360/1250	550
16"	185/75R16C	D/8PR	104/102R	5.0J	184	684	900/850	475	TL	LT265/70R17		E/10PR	121/118Q	8.0J	272	804	1450/1320	550	TL
	LT225/75R16	E/10PR	115/112Q	6.0J	223	744	1215/1120	550	TL	LT285/70R17		D/8PR	121/118Q	8.5J	292	832	1450/1320	450	TL
	LT245/75R16	E/10PR	120/116Q	7.0J	248	774	1380/1260	550	TL	LT245/75R17	E/10PR	121/118Q	7.0J	248	800	1450/1320	550	TL	
	LT265/75R16	E/10PR	123/120Q	7.5J	267	804	1550/1400	550	TL	LT235/80R17	E/10PR	120/117Q	6.5J	235	808	1400/1285	550	TL	
	LT285/75R16	D/8PR	122/119Q	8.0J	286	834	1500/1360	450	TL	18"	LT275/65R18	E/10PR	123/120Q	8.0J	279	815	1550/1400	550	TL

● Made in China ● Made in Thailand

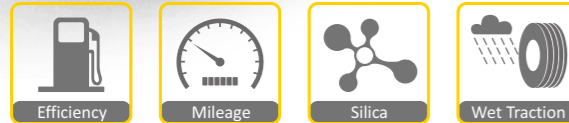
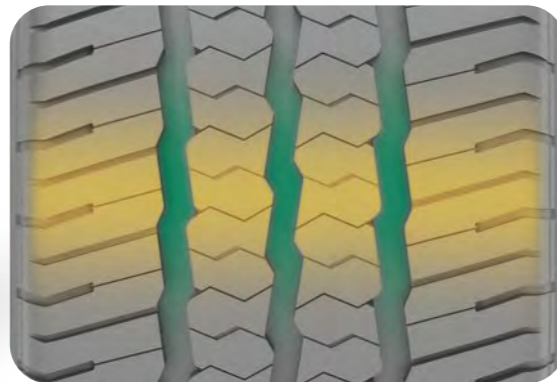


SC328



Benefits and Features

- Wide four ribs improve miles to tread life
- Zig-zag grooves offers enhanced traction on wet road
- Combination construction of polyester casing and steel belts provide outstanding durability



M+S

Rim Size	12 - 16
Series	60 - 75
Speed Rating	Q - T

SC328

Rim (inch)	Size	LR/PR	Service Index	Standard Rim	Section Width (mm)	Overall Diameter (mm)	Max. Load (kg)	Max. Air Pressure (kpa)	TT/TL	Rim (inch)	Size	LR/PR	Service Index	Standard Rim	Section Width (mm)	Overall Diameter (mm)	Max. Load (kg)	Max. Air Pressure (kpa)	TT/TL
12"	155R12C	C/6PR	83/81Q	4.5B	157	550	487/462	350	TL	15"	215/70R15C	D/8PR	109/107R	6.5J	221	683	1030/975	475	TL
	155R12C	D/8PR	88/86Q	4.5B	157	550	560/530	450	TL		225/70R15C	D/8PR	112/110R	6.5J	228	697	1120/1060	450	TL
13"	155R13C	D/8PR	90/88S	4.5B	157	578	600/560	450	TL	16"	175R16C	C/6PR	98/96Q	5.0J	178	684	750/710	375	TL
	165R13C	C/6PR	91/89Q	4.5B	167	596	615/580	375	TL		215/60R16C	D/8PR	108/106T	6.5J	221	664	1000/950	475	TL
	165R13C	D/8PR	94/92Q	4.5B	165	594	670/650	450	TL		195/65R16C	D/8PR	104/102T	6.0J	201	660	900/850	475	TL
	175R13C	D/8PR	97/95Q	5.0B	178	609	730/690	450	TL		205/65R16C	D/8PR	107/105T	6.0J	209	672	975/925	475	TL
14"	165/70R13C	C/6PR	88/86S	5.0B	170	562	560/530	375	TL	215/65R16C	D/8PR	109/107R	6.5J	221	686	1030/975	475	TL	
	185R14C	D/8PR	102/100Q	5.5J	188	650	850/800	450	TL	225/65R16C	D/8PR	112/110R	6.5J	228	698	1120/1060	475	TL	
	195R14CWSW	D/8PR	106/104Q	5.5J	198	666	950/900	450	TL	235/65R16C	D/8PR	115/113R	7.0J	240	712	1215/1150	475	TL	
	205R14C	D/8PR	109/107R	6.0J	208	686	1030/975	450	TL	235/65R16C	F/12PR	121/119R	7.0J	240	712	1450/1360	575	TL	
	215R14C	D/8PR	112/110Q	6.0J	218	700	1120/1060	450	TL	215/70R16C	C/6PR	108/106T	6.5J	221	708	1000/950	375	TL	
	165/70R14C	C/6PR	89/87R	5.0J	170	588	580/545	375	TL	215/70R16C	E/10PR	113/111Q	6.5J	221	708	1150/1090	585	TL	
	205/70R14C	C/6PR	102/100R	6.0J	209	644	850/800	375	TL	175/75R16C	D/8PR	101/99Q	5.0J	177	668	825/775	475	TL	
	215/75R14C	D/8PR	112/110Q	6.0J	216	678	1120/1060	475	TL	195/75R16C	D/8PR	107/105R	5.5J	196	698	975/925	475	TL	
15"	185R15C	D/8PR	103/102R	5.5J	188	674	875/850	450	TL	195/75R16C	E/10PR	110/108R	5.5J	196	698	1060/1000	525	TL	
	195R15C	D/8PR	106/104R	5.5J	198	690	950/900	450	TL	205/75R16C	D/8PR	110/108Q	5.5J	203	714	1060/1000	475	TL	
	215R15C	D/8PR	112/110Q	6.0J	218	724	1120/1060	450	TL	205/75R16C	E/10PR	113/111R	5.5J	203	714	1150/1090	525	TL	
	205/65R15C	C/6PR	102/100T	6.0J	209	647	850/800	375	TL	205/75R16C	F/12PR	116/114R	5.5J	203	714	1250/1180	575	TL	
	195/70R15C	D/8PR	104/102R	6.0J	201	655	900/850	450	TL	215/75R16C	D/8PR	113/111Q	6.0J	216	728	1150/1090	475	TL	
	205/70R15C	D/8PR	106/104R	6.0J	209	669	950/900	475	TL	215/75R16C	E/10PR	116/114R	6.0J	216	728	1250/1180	525	TL	

● Made in China ● Made in Thailand WSW White Sidewall Tyre (WSW)



SC326



Benefits and Features

- ▶ Balanced pattern arrangement for increased traction
- ▶ Latest profile design ensure longer tyre life
- ▶ Improved casing structure provides outstanding durability



Rim Size	14 - 16
Series	65 - 75
Speed Rating	Q - T

SC326

Rim (inch)	Size	LR/PR	Service Index	Standard Rim	Section Width (mm)	Overall Diameter (mm)	Max. Load (kg)	Max. Air Pressure (kpa)	TT/TL
14"	185R14C	D/8PR	102/100R	5.5J	188	650	850/800	450	TL
	195R14C	D/8PR	106/104Q	5.5J	198	666	950/900	450	TL
	195R14C	E/10PR	110/108Q	5.5J	198	666	1060/1000	525	TL
	205R14C	D/8PR	109/107Q	6.0J	208	686	1030/975	450	TL
	205R14C	E/10PR	113/111Q	6.0J	208	686	1150/1090	525	TL
15"	195R15C	D/8PR	106/104R	5.5J	198	690	950/900	450	TL
	215R15C	D/8PR	112/110Q	6.0J	218	724	1120/1060	450	TL
15"	205/70R15C	D/8PR	106/104R	6.0J	209	669	950/900	475	TL
	205/70R15C	E/10PR	108/106Q	6.0J	209	669	1000/950	525	TL
	215/70R15C	D/8PR	109/107R	6.5J	221	683	1030/975	475	TL
	225/75R15C	D/8PR	116/114Q	6.0J	223	719	1250/1180	475	TL
	215/65R16C	D/8PR	109/107R	6.5J	221	686	1030/975	475	TL
16"	235/65R16C	F/12PR	121/119R	7.0J	240	712	1450/1360	575	TL
	215/70R16C	C/6PR	108/106T	6.5J	221	708	1000/950	375	TL

Made in Thailand



H188



Benefits and Features

- Valuable commercial light truck tyre for vehicles on paved roads
- 3 rib grooves provides improved handling and comfort
- Polyester tyre casing with steel belts for good durability



M+S

Rim Size	12 - 16
Series	60 - 75
Speed Rating	Q - H

H188

Rim (inch)	Size	LR/PR	Service Index	Standard Rim	Section Width (mm)	Overall Diameter (mm)	Max. Load (kg)	Max. Air Pressure (kpa)	TT/TL
12"	155R12C	C/6PR	83/81Q	4.5B	157	550	487/462	350	TL
	155R12C	D/8PR	88/86Q	4.5B	157	550	560/530	450	TL
13"	155R13C	D/8PR	90/88S	4.5B	157	578	600/560	450	TL
	165R13C	C/6PR	91/89S	4.5B	167	596	615/580	375	TL
	165/70R13C	C/6PR	88/86S	5.0J	170	562	560/530	375	TL
14"	185R14CWSW	D/8PR	102/100R	5.5J	188	650	850/800	450	TL
	195R14CWSW	D/8PR	106/104Q	5.5J	198	666	950/900	450	TL
	175/70R14C	C/6PR	95/93S	5.0J	177	602	690/650	375	TL
	175/75R14C	D/8PR	94/91S	5.0J	177	618	775/750	475	TL
	195R15CWSW	D/8PR	106/104R	5.5J	198	690	950/900	450	TL
15"	205/65R15C	C/6PR	102/100T	6.0J	209	647	850/800	375	TL
	215/65R15C	C/6PR	104/102T	6.5J	221	661	900/850	375	TL
	195/70R15C	D/8PR	104/102R	6.0J	201	655	900/850	450	TL
	205/70R15C	D/8PR	106/104R	6.0J	209	669	950/900	475	TL
	16"	215/70R15CWSW	D/8PR	109/107R	6.5J	221	683	1030/975	475
225/70R15CWSW		D/8PR	112/110R	6.5J	228	697	1120/1060	450	TL
195/60R16C		C/6PR	99/97H	6.0J	201	640	775/730	375	TL
215/60R16C		D/8PR	108/106T	6.5J	221	664	1000/950	475	TL
195/65R16C		D/8PR	104/102T	6.0J	201	660	900/850	475	TL
16"	205/65R16C	D/8PR	107/105T	6.0J	209	672	975/925	475	TL
	215/65R16C	D/8PR	109/107T	6.5J	221	686	1030/975	475	TL
	225/65R16C	D/8PR	112/110T	6.5J	228	698	1120/1060	475	TL
	235/65R16C	D/8PR	115/113R	7.0J	240	712	1215/1150	475	TL
	185/75R16C	D/8PR	104/102R	5.0J	184	684	900/850	475	TL
	195/75R16C	D/8PR	107/105R	5.5J	196	698	975/925	475	TL
	205/75R16C	D/8PR	110/108Q	5.5J	203	714	1060/1000	475	TL
	215/75R16C	D/8PR	113/111Q	6.0J	216	728	1150/1090	475	TL
	225/75R16C	E/10PR	118/116R	6.0J	223	744	1320/1250	525	TL

Made in China
 Made in Thailand
 WSW White SideWall (WSW)



ST313



Benefits and Features

- Applicable for mini-bus, van and commercial light trucks
- Strong sidewall design enables high durability and fights off cuts and abrasion in city roads
- Triply polyester belts plies creates strength bearing heavy loads with superior stability



Rim Size	15 - 16
Series	75 - 85
Speed Rating	L - R

ST313

Rim (inch)	Size	LR/PR	Service Index	Standard Rim	Section Width (mm)	Overall Diameter (mm)	Max. Load (kg)	Max. Air Pressure (kpa)	TT/TL
15"	6.50R15LT	E/10PR	107/105N	5.5F	180	730	975/925	560	TT/TL
	7.00R15LT	E/10PR	110/106N	5.5F	200	750	1060/950	560	TT/TL
	195/75R15C	F/12PR	109/107L	5.5J	196	673	1030/975	600	TL
16"	6.50R16LT	E/10PR	108/107N	5.5F	185	750	1000/975	560	TT/TL
	7.00R16LT	F/12PR	117/116N	5.5F	200	775	1285/1250	670	TT/TL
	7.00R16LT	F/12PR	117/116N	5.5F	200	775	1285/1250	670	TT/TL

🇨🇳 Made in China 🇹🇭 Made in Thailand

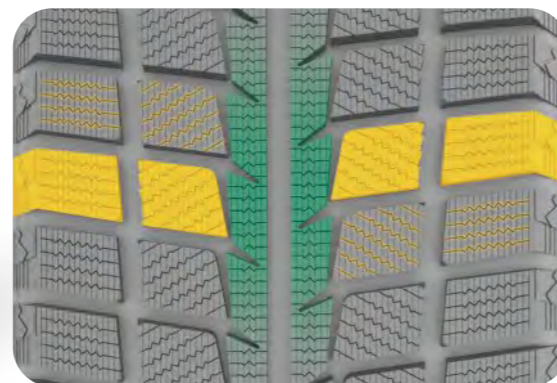


SW618



Benefits and Features

- Premium studless winter tyre providing excellent snow, slush and wet traction in cold climates
- Special pattern design to promote aggressive bite in deep snow and wet road conditions
- Superior tread compound keeps rubber flexible for maximum performance in extreme cold temperatures in winter



M+S



Rim Size	13 - 20
Series	30 - 70
Speed Rating	T - V

SW618

Rim (inch)	Size	LR/PR	Service Index	Standard Rim	Section Width (mm)	Overall Diameter (mm)	Max. Load (kg)	Max. Air Pressure (kpa)	TT/TL	
13"	155/65R13	-	73T	4.5J	157	532	365	300	TL	
	165/65R13	-	77T	5.0J	170	544	412	300	TL	
	165/70R13	-	79T	5.0J	170	562	437	300	TL	
	175/70R13	-	82T	5.0J	177	576	475	300	TL	
14"	165/60R14	-	75T	5.0J	170	554	387	300	TL	
	185/60R14	-	82T	5.5J	189	578	475	300	TL	
	155/65R14	-	75T	4.5B	157	558	387	300	TL	
	175/65R14	-	82T	5.0J	177	584	475	300	TL	
	185/65R14	-	86T	5.5J	189	596	530	300	TL	
	165/70R14	-	81T	5.0J	170	588	462	300	TL	
	175/70R14	-	84T	5.0J	177	602	500	300	TL	
	185/70R14	-	88T	5.5J	189	616	560	300	TL	
15"	195/70R14	-	91T	6.0J	201	630	615	300	TL	
	195/50R15	-	82T	6.0J	201	577	475	300	TL	
	185/55R15	-	82T	6.0J	194	585	475	300	TL	
	195/55R15	-	85H	6.0J	201	595	515	300	TL	
	185/60R15	-	84T	5.5J	189	603	500	300	TL	
	195/60R15	-	88T	6.0J	201	615	560	300	TL	
	185/65R15	-	88T	5.5J	189	621	560	300	TL	
	195/65R15	-	91T	6.0J	201	635	615	300	TL	
	205/65R15	-	94T	6.0J	209	647	670	300	TL	
	205/70R15	-	96T	6.0J	209	669	710	300	TL	
16"	215/70R15	-	98T	6.5J	221	683	750	300	TL	
	195/55R16 XL	-	91V	6.0J	201	620	615	350	TL	
	205/55R16	-	91H	6.5J	214	632	615	300	TL	
	215/55R16	-	93T	7.0J	226	642	650	300	TL	
	225/55R16	-	95T	7.0J	233	654	690	300	TL	
	195/60R16	-	89T	6.0J	201	640	580	300	TL	
	205/60R16	-	92T	6.0J	209	652	630	300	TL	
	215/60R16	-	95T	6.5J	221	664	690	300	TL	
17"	225/60R16	-	98T	6.5J	228	676	750	300	TL	
	205/65R16	-	95T	6.0J	209	672	690	300	TL	
	215/65R16	-	98T	6.5J	221	686	750	300	TL	
	225/65R16	-	100T	6.5J	228	698	800	300	TL	
	215/45R17 XL	-	91V	7.0J	213	626	615	350	TL	
	235/45R17 XL	-	97T	8.0J	236	644	730	350	TL	
	215/50R17 XL	-	95H	7.0J	226	648	690	350	TL	
	225/50R17	-	94T	7.0J	233	658	670	300	TL	
	235/50R17 XL	-	100H	7.5J	245	668	800	350	TL	
	215/55R17	-	94T	7.0J	226	668	670	300	TL	
18"	225/55R17 XL	-	101H	7.0J	233	680	825	350	TL	
	235/55R17	-	99T	7.5J	245	690	775	300	TL	
	225/60R17	-	99T	6.5J	228	702	775	300	TL	
	225/65R17	-	102T	6.5J	228	724	850	300	TL	
	235/65R17	-	104T	7.0J	240	738	900	300	TL	
	235/40R18 XL	-	95V	8.5J	241	645	690	350	TL	
	225/45R18 XL	-	95H	7.5J	225	659	690	350	TL	
	235/45R18 XL	-	98T	8.0J	236	669	750	350	TL	
	245/45R18 XL	-	100T	8.0J	243	677	800	350	TL	
	235/50R18 XL	-	101T	7.5J	245	693	825	350	TL	
19"	245/50R18 XL	-	104T	7.5J	253	703	900	350	TL	
	215/55R18 XL	-	99H	7.0J	226	693	775	350	TL	
	225/55R18	-	98H	7.0J	233	705	750	300	TL	
	235/55R18 XL	-	104T	7.5J	245	715	900	350	TL	
	245/60R18	-	105H	7.0J	248	751	925	300	TL	
	235/50R19	-	99H	7.5J	245	719	775	300	TL	
	235/55R19 XL	-	105H	7.5J	245	741	925	350	TL	
	255/55R19 XL	-	111H	8.0J	265	763	1090	350	TL	
	20"	275/30R20 XL	-	97H	9.5J	278	674	730	350	TL
		275/45R20 XL	-	110H	9.0J	273	756	1060	350	TL
255/50R20 XL		-	109H	8.0J	265	764	1030	350	TL	

Made in China

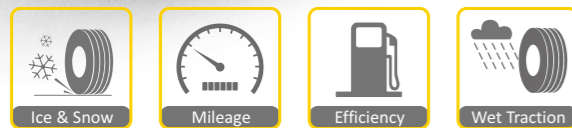
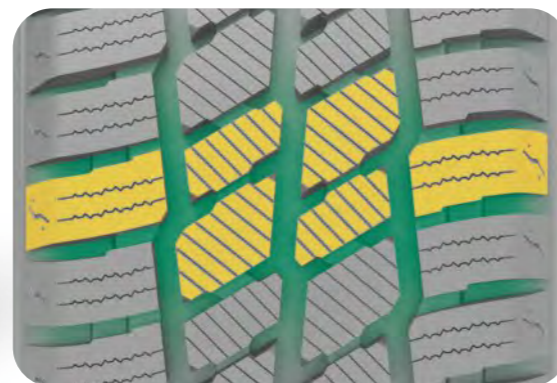


SW612



Benefits and Features

- All-round winter performance for vans and other commercial vehicles
- Remarkable safety through excellent grip, handling and traction in snow, mud and wet surface
- Comfortable ride and precise handling with long tread life



Rim Size	12 - 16
Series	60 - 75
Speed Rating	N - T

SW612

Rim (inch)	Size	LR/PR	Service Index	Standard Rim	Section Width (mm)	Overall Diameter (mm)	Max. Load (kg)	Max. Air Pressure (kpa)	TT/TL
12"	155R12C	D/8PR	88/86Q	4.5B	157	550	560/530	450	TL
	155R13C	C/6PR	85/83Q	4.5J	157	578	515/487	350	TL
	165R13C	C/6PR	91/89Q	4.5B	165	594	615/580	450	TL
13"	175R13C	D/8PR	97/95Q	5.0B	177	610	730/690	450	TL
	185R14C	D/8PR	102/100R	5.5J	188	650	850/800	450	TL
	175/70R14C	C/6PR	95/93Q	5.0J	177	602	690/650	375	TL
14"	195R15C	D/8PR	106/104R	5.5J	196	693	950/900	450	TL
	205/65R15C	C/6PR	102/100T	6.0J	209	647	850/800	375	TL
	195/70R15C	D/8PR	104/102R	6.0J	201	655	900/850	450	TL
15"	205/70R15C	D/8PR	106/104R	6.0J	209	669	950/900	450	TL
	215/70R15C	D/8PR	109/107R	6.5J	221	683	1030/975	450	TL
	225/70R15C	D/8PR	112/110R	6.5J	228	697	1120/1060	450	TL
16"	6.50R16	E/10PR	108/107N	5.5F	185	750	1000/975	560	TL
	7.00R16	F/12PR	117/116N	5.5F	200	775	1258/1250	670	TL
	195/60R16C	C/6PR	99/97T	6.0J	201	640	775/730	375	TL
16"	195/65R16C	D/8PR	104/102T	6.0J	201	660	900/850	475	TL
	205/65R16C	D/8PR	107/105T	6.0J	209	672	975/925	475	TL
	215/65R16C	D/8PR	109/107R	6.5J	221	686	1030/975	475	TL
16"	225/65R16C	D/8PR	112/110R	6.5J	228	698	1120/1060	475	TL
	235/65R16C	D/8PR	115/113R	7.0J	240	712	1215/1150	475	TL
	185/75R16C	D/8PR	104/102Q	5.0J	184	684	900/850	475	TL
16"	195/75R16C	D/8PR	107/105R	5.5J	196	698	975/925	475	TL
	205/75R16C	D/8PR	110/108Q	5.5J	203	714	1060/1000	475	TL
	215/75R16C	D/8PR	113/111Q	6.0J	216	728	1150/1090	475	TL
16"	225/75R16C	E/10PR	118/116Q	6.0J	223	744	1320/1250	525	TL

Made in China

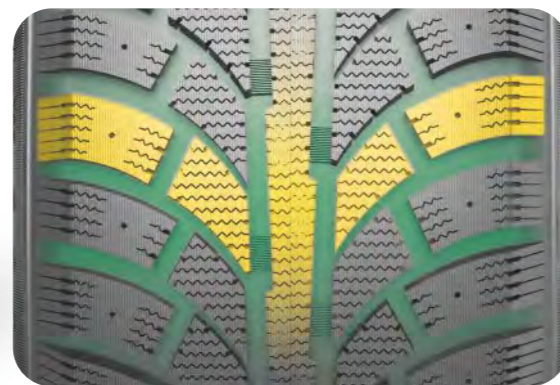


SW606



Benefits and Features

- Stable V-shaped tread design delivers outstanding traction and braking performance on snow and icy roads
- Stiff shoulder blocks deliver outstanding cornering stability and enhanced grips



Rim Size	15 - 18
Series	65 - 85
Speed Rating	Q - R

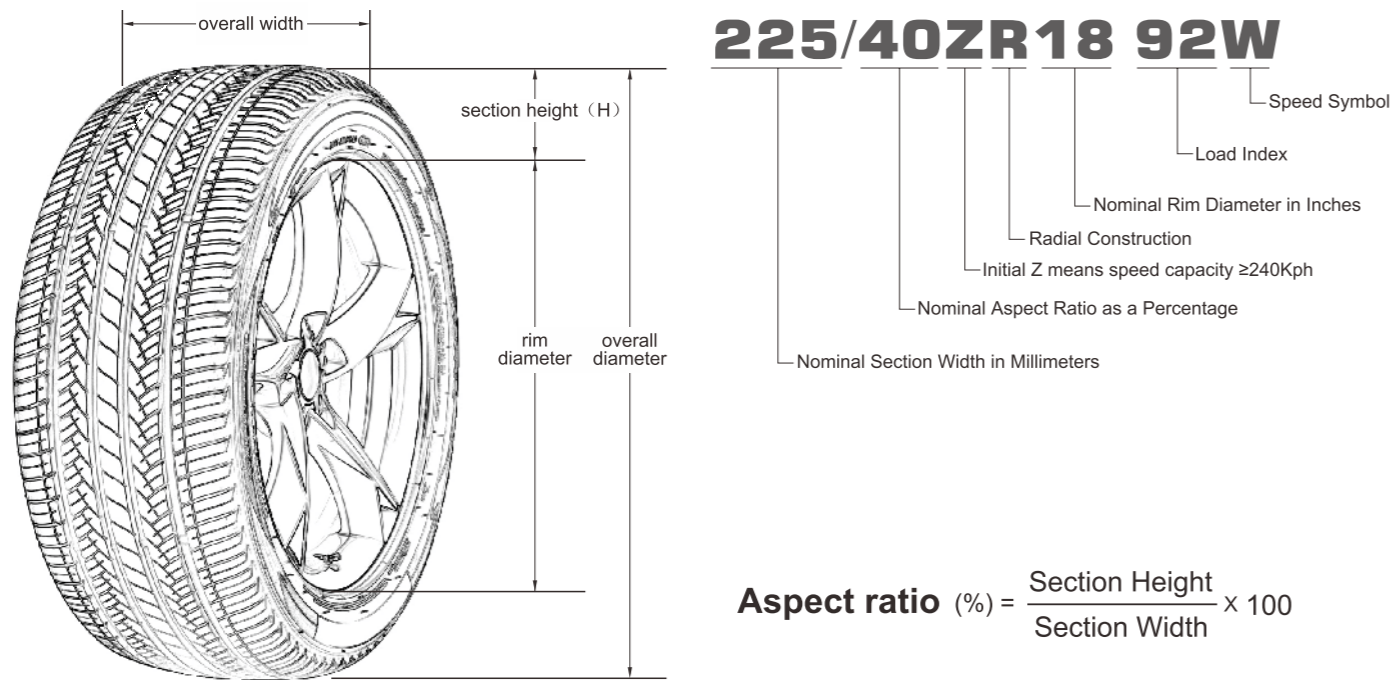
SW606

Rim (inch)	Size	LR/PR	Service Index	Standard Rim	Section Width (mm)	Overall Diameter (mm)	Max. Load (kg)	Max. Air Pressure (kpa)	TT/TL
15"	195/70R15C	D/8PR	104/102R	6.0J	201	655	900/850	450	TL
	225/70R15C	D/8PR	112/110R	6.5J	228	697	1120/1060	450	TL
16"	185/75R16C	D/8PR	104/102R	5.0J	184	684	900/850	475	TL
	LT225/75R16	E/10PR	115/112Q	6.0J	220	739	1215/1120	550	TL
	LT245/75R16	E/10PR	120/116Q	7.0J	245	771	1380/1260	550	TL
	LT265/75R16	E/10PR	123/120Q	7.5J	264	802	1550/1400	550	TL
17"	LT245/70R17	E/10PR	119/116Q	7.0J	245	771	1360/1250	550	TL
	LT265/70R17	E/10PR	121/118Q	8.0J	269	799	1450/1320	550	TL
18"	LT285/70R17	E/10PR	121/118Q	8.5J	288	826	1450/1320	550	TL
	LT245/75R17	E/10PR	121/118Q	7.0J	245	795	1450/1320	550	TL
	LT235/80R17	E/10PR	120/117Q	6.5J	232	802	1400/1285	550	TL
18"	LT275/65R18	E/10PR	123/120Q	8.0J	282	810	1550/1400	550	TL
	LT275/70R18	E/10PR	125/122Q	8.0J	270	837	1650/1500	550	TL

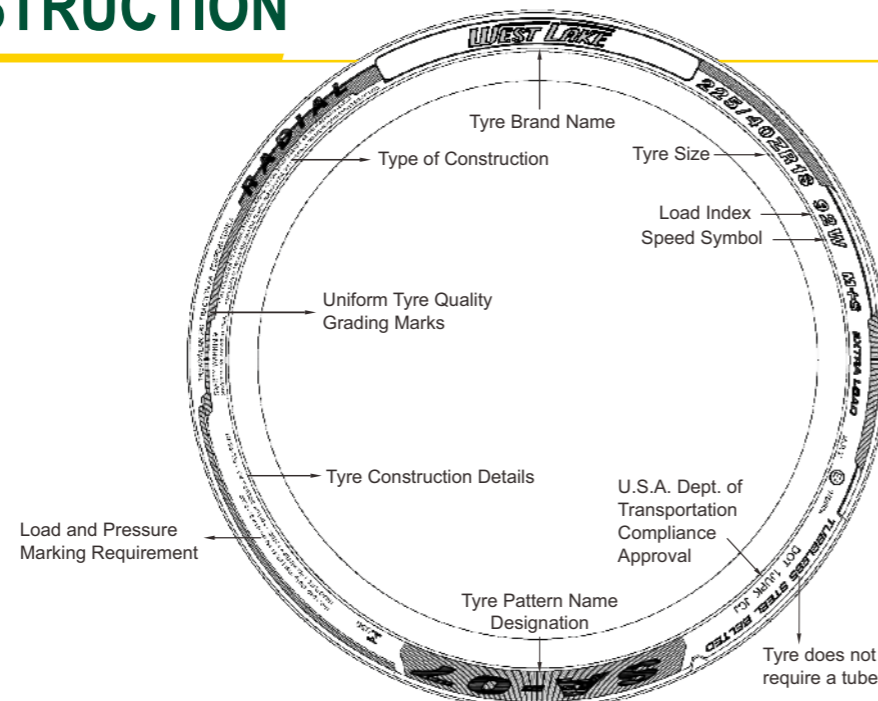
Made in China



TYRE SIZE KNOWLEDGE



SIDEWALL INSTRUCTION



OTHER MARKINGS

- P** as part of the tyre size designation (e.g., P205/65R15) used to indicate tyres intended for services on passenger cars.
- LT** as part of the size designation (e.g., LT235/75R15) used to indicate the tyres are intended for light truck vehicles.
- M&S** letters used to indicate a tyre suitable for Mud and Snow and/or All Season usage.
- XL** as part of the size designation (e.g., P235/75R16 XL) used to indicate the tyre can carry more loads as the maximum inflation pressure and load are greater than a standard load version. (Also could be called REINFORCED or RF).
- ZR** as part of the tyre size designation (e.g. 225/45ZR17 XL) used to indicate the tyre has a maximum speed over 240 kilometer per hour.

TYRE UPGRADE

"Tyre Upgrade" means: increase of rim diameter without changing of tyre overall diameter, the trend in development of low aspect ratio is called upgrade.

INCREASE OF SPORTY PERFORMANCE

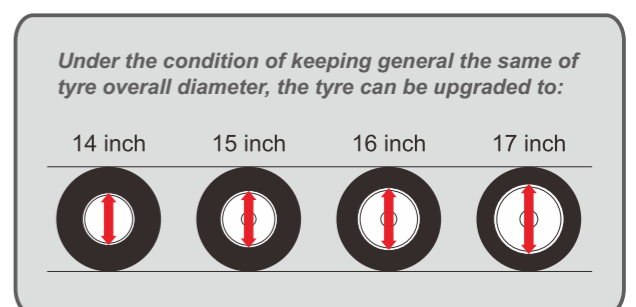
The tyre response will be more sensitive when you turn the steering wheel that the flex of tyre will be reduced, and the performance of steering and handling stability will be better, especially under medium and high speed driving.

ENHANCEMENT OF BRAKING ABILITY

The braking stability will be improved due to the decrease of tyre flex when you brake.

Please refer to the clarifications set forth below to upgrade the tyre:

- Without any particular reason, please do not change the overall diameter of tyre easily. The alternation of tyre overall diameter will cause misreading of speedometer or mutual interference between tyre and other parts of vehicle.
- Please determine the width of tyre in accordance with the specific width of vehicle. If the width of the entyre tyre is increased overly, it will cause mutual interference between tyre and other parts of vehicle, even heading out of the tyre from bodywork which will initiate danger.
- Notice the load index of vehicle when you upgrade the tyre. There is rule to the weight which the tyre can bear (load index) for each size. Please refer to the load index when you chose the proper size.



TYRE ROTATION AND INFLATION

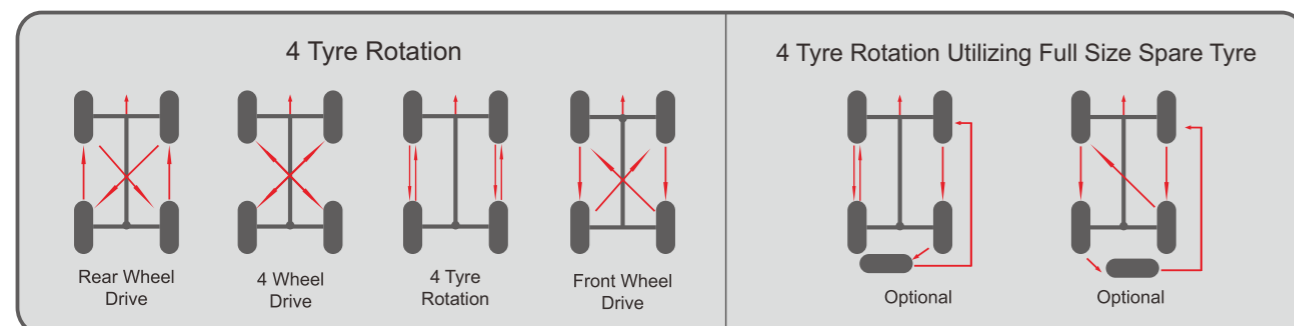
TYRE ROTATION

The purpose for rotating tyres is to achieve a more uniform wear for all tyres on a vehicle. Before rotating tyres, determine the cause of any unusual wear and correct any misalignment, imbalance, or other mechanical problems.

Otherwise it will cause: **1.** Ride disturbing; **2.** More noise; **3.** Poor ride comfort; **4.** Shorter of life span.

Note: it is suggested that tyres should be transposed as soon as the phenomena above mentioned are detected (especially the two front wheels).

The tyre transposition patterns are acceptable below. Please refer to your vehicle owner's manual regarding tyre transposition advice.



TYRE INFLATION

One of the most important aspects of tyre maintenance is proper inflation.

Sufficient inflation is needed to carry the load and avoid damage. Driving with improper inflation (particularly grossly under inflated or over inflated tyres) is dangerous and can cause critical damage or sudden failure of the tyre(s). Proper inflation should be maintained and check on at least weekly bases and before long distance drives.

Proper inflation should be maintained and checked at least once a week and before a long distance drive.

It is also advisable to take into account axle load and driving conditions when setting inflation pressure. Compensation for heavier loads can be made by increasing inflation pressure, but do not exceed maximum inflation for the tyre or maximum axle load.

In the space of just one month, a tyre can lose 10 pounds of air pressure.

It is important to check your air pressure regularly, to make sure your tyres are neither under nor over inflated.

Under-inflation

Is the worst enemy your tyre can have. It causes increased treadwear on the outside edges (or shoulders)of the tyre. It

also generates excessive heat, which reduces tyre durability. Finally it reduces your fuel economy by increasing rolling resistance-soft tyres make your vehicle work harder.

Over-inflation

Is also detrimental to the tyre. Too much air pressure causes the center of the tread to bear the majority of the truck's weight, which leads to faster deterioration and uneven wear. Any kind of uneven wear will shorten the lifespan of your tyres.

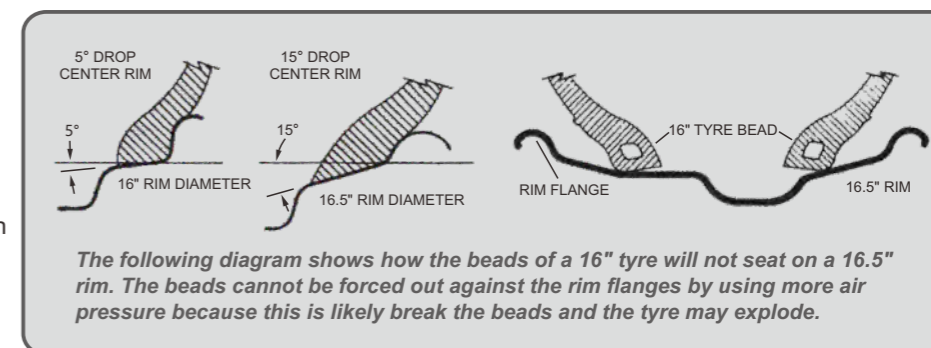
MOUNTING PROCEDURE

There is extreme danger in attempting to install a tyre of one rim diameter on a rim of a different rim diameter.

Always replace a tyre on a rim with another tyre of exactly the same diameter tyre designation and suffix letters.

For example, a 16" tyre goes with a 16" rim. Never mount a 16" size diameter tyre on a 16.5" rim. While it is possible to pass a 16" diameter tyre over the lip or flange of a 16.5" size diameter rim, it cannot be inflated enough to position itself against the rim flange. If an attempt is made to seat the tyre bead by inflating, the tyre bead may break with explosive force and could cause serious bodily injury or death.

Rims of different diameters and tapers cannot be interchanged. The top right diagrams illustrate the difference between rims of two different tapers and diameters.



FOR YOUR SAFETY AND COMFORT

Any tyre, no matter how well constructed, may fail in use as a result of punctures, impact damage, improper inflation or other conditions resulting from use.

Tyre failure may create risk of properly damage or personal injury. To reduce the risk of tyre failure and for your safety and comfort, we strongly recommend the following:

- Never mount a tyre on a rim that is damaged or which has been repaired by welding or brazing.

- Never inflate beyond 275 kPa (2.75bar, 40psi) to seat beads.
- Tyre inflation should be done in a safety cage.
- Do not mix different tyre size designations or construction on the same axle, except for limited use of temporary spare tyres.
- Outer diameter of wheel should be the same as inner diameter of tyre.
- Make sure to follow instructions in the car owner's manual or on the vehicle tyre information placard in the car to maintain proper tyre pressure (Particularly driving on highway and/or when carrying heavy loads).
- Never bleed or reduce air pressure when tyres are hot from driving.
- Over- or under-inflation pressure (including spare tyre) at least once a month and before every long trip.
- Stones, gravel and other outer objects stuck in the tyre treads may damage the tyre. Remove outer objects from the tyre treads.
- Tyre should only be mounted by professionally trained persons.
- Objects in the road such as potholes, glass, metal, rocks, wood debris, curbstones and such, which could damage a tyre should be safely avoided.
- To preserve traffic safety and tyre life, ZC rubber recommends driving safely and avoiding hard acceleration, braking or cornering in unnecessary situations.
- If you feel the car is unstable or feel any unusual noises or vibrations, stop your car in safe place and inspect your tyres. Even if no visible defects are found, drive slowly and ask your dealer to inspect your tyres as soon as possible.
- Winter tyres (studless, stud or snow tyres) should not be mixed with other types of tyres.
- New winter tyre should not be driven over 80km/h for the first 100km.
- When driving on winter roads, sudden starts and quick stops should be avoid and a safe car-to-car driving distance should be maintained.
- When using tyre chains be sure to use the proper size chains and affix with priority to the drive axle.
- Avoid driving with tyre chains for long distance on roads with no packed snow or ice.

Never use a tyre under the following conditions and replace tyres immediately:

- If the tread has worn to the tread wear indicator.
- If breaks in the fabric appear.
- If cords or wires are exposed.

Storage of steel belted radial tyres:

- Keep your tyres away from direct sunlight and locations with high temperature, high moisture, heavy electrical machinery, welders etc.
- Tyres should be preferably stored in a cool, dry, and dark room with controlled environment.

To preserve traffic safety, ZC rubber recommends driving substantially slower under adverse weather or road conditions.

ROUTINE MAINTENANCE

- Each month the tyre pressure should be checked one time at least when the tyre is cool, too much or less of the pressure will cause damage to tyre.
- Please take a 15-minutes break after driving on expressway for two hours.
- Please ensure that there are no nails, metal pieces, glass or other foreign materials.
- Please ensure that there is no damage such as separation, distortion and distinct rusting which will cause air leakage.
- Please transpose the tyres regularly (approximately 5000 km) in accordance with abrasion conditions for the sake of expanding its life span and preventing eccentric wear.
- No tyre brightener.

THE INVENTORY OF STEEL-CORD RADIAL TYRE

The tyre should be placed in dry interior.

Note: In order to ensure the driving safety, we suggest that please decrease the speed while driving under atrocious weather and poor terrain condition.

SPEED RATING

The speed symbol refers to the maximum speed capabilities of the tyre. It is only valid for tyres that are properly inflated and loaded within their assigned load index.

Speed Rating	L	N	P	Q	R	S	T	U	H	V	W	Y	ZR
Max. Kph. (Kilometer/hour)	120	140	150	160	170	180	190	200	210	240	270	300	≥240

LOAD INDEX

The load index is the maximum load-carrying capacity of a tyre under a specific condition.

Load Index	KG	LBS	Load Index	KG	LBS	Load Index	KG	LBS	Load Index	KG	LBS	Load Index	KG	LBS
50	190	420	70	335	740	90	600	1320	110	1060	2340	130	1900	4180
51	195	430	71	345	760	91	615	1360	111	1090	2400	131	1950	4300
52	200	440	72	355	785	92	630	1390	112	1120	2470	132	2000	4400
53	206	455	73	365	805	93	650	1430	113	1150	2540	133	2060	4540
54	212	465	74	375	825	94	670	1480	114	1180	2600	134	2120	4680
55	218	480	75	387	855	95	690	1520	115	1215	2680	135	2180	4800
56	224	495	76	400	880	96	710	1570	116	1250	2760	136	2240	4940
57	230	505	77	412	910	97	730	1610	117	1285	2830	137	2300	5080
58	236	520	78	425	935	98	750	1650	118	1320	2910	138	2360	5200
59	243	535	79	437	965	99	775	1710	119	1360	3000	139	2430	5360
60	250	550	80	450	990	100	800	1760	120	1400	3080	140	2500	5520
61	257	565	81	462	1020	101	825	1820	121	1450	3200	141	2575	5680
62	265	585	82	475	1050	102	850	1870	122	1500	3300	142	2650	5840
63	272	600	83	487	1070	103	875	1930	123	1550	3420	143	2725	6000
64	280	615	84	500	1100	104	900	1980	124	1600	3520	144	2800	6150
65	290	640	85	515	1140	105	925	2040	125	1650	3640	145	2900	6400
66	300	660	86	530	1170	106	950	2090	126	1700	3740	146	3000	6600
67	307	675	87	545	1200	107	975	2150	127	1750	3860	147	3075	6800
68	315	695	88	560	1230	108	1000	2200	128	1800	3960	148	3150	6950
69	325	715	89	580	1280	109	1030	2270	129	1850	4080	149	3250	7150

WEST LAKE



www.westlaketyre.com



www.facebook.com/westlaketyreglobal



ZHONGCE RUBBER GROUP CO., LTD.



www.zc-rubber.com



www.facebook.com/zcrubber



www.twitter.com/zc_rubber



www.linkedin.com/company/zcrubber