



TRUCK & BUS TYRE CATALOG

LONG HAUL

REGIONAL

MIXED SERVICE

URBAN

WINTER

General Version





COMPANY INTRODUCTION

TOP 9
No. 9 of Top 75 Global Tyre Manufacturers

SINCE 1958
Established in Year 1958

30,000 EMPLOYEES
Support from Over 30,000 Employees

200 MARKETS
Trust from Customers Across More than 200 Markets

Zhongce Rubber Group Co., Ltd (ZC-Rubber) is a global tyre company based in Hangzhou, China and was founded in 1958. Over our more than 60 years of history, we experienced continuous growth in quality and reputation to become the Top 10 tyre manufacturer worldwide today.

Our engineers with our international R&D team focus on constant technological development and innovation spending millions of US dollars in research and development each year and upgrading our production and testing facilities. The ET Industrial Brain in the production process promises our smart production and guarantee tyres with high quality, safety, and value with maximum efficiency.

We have formed an extensive global service network of about 1,200 distributors with 250,000 sales locations in 160 countries. Our subsidiaries in Thailand, Germany, Brazil, and the United States serve customers without any difference in time and language. We are dedicated to better support our suppliers, distributors, and customers through a one-stop service.

Safe and Value are always the key of our company. We take pride in the superior quality of our tyre products and the first-rate services. We are still endeavoring to become one of the most respected tyre manufacturers globally and craft a better future with all partners and friends.

Most Advanced Equipment

Best Raw Material

Leanest Management

Latest Technology

Least Energy Consumption

Most Suitable Products

COMPANY MISSION

WE ARE COMMITTED TO
ADVANCING TOWARDS
FUTURE MOBILITY

COMPANY VISION

TO BE A GLOBAL LEADING
TYRE MANUFACTURER



China Compulsory Certification



US DOT Certification



European E-MARK Certification



SNI Certification of Indonesia

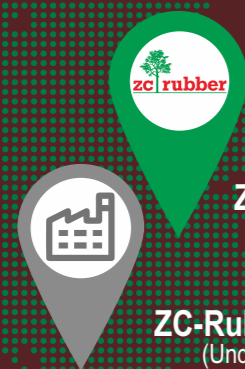


BIS Certification of India



INMETRO Certification of Brazil

GLOBAL BRANCHES & SUBSIDIARIES



ZC-Rubber America Inc.

ZC-Rubber Mexico
(Under Planning)



ZC-Rubber Brasil Co. Ltd.



ZC-Rubber Europe Technical Center
ZC-Rubber Europe GmbH



ZC-Rubber Thailand Co. Ltd.

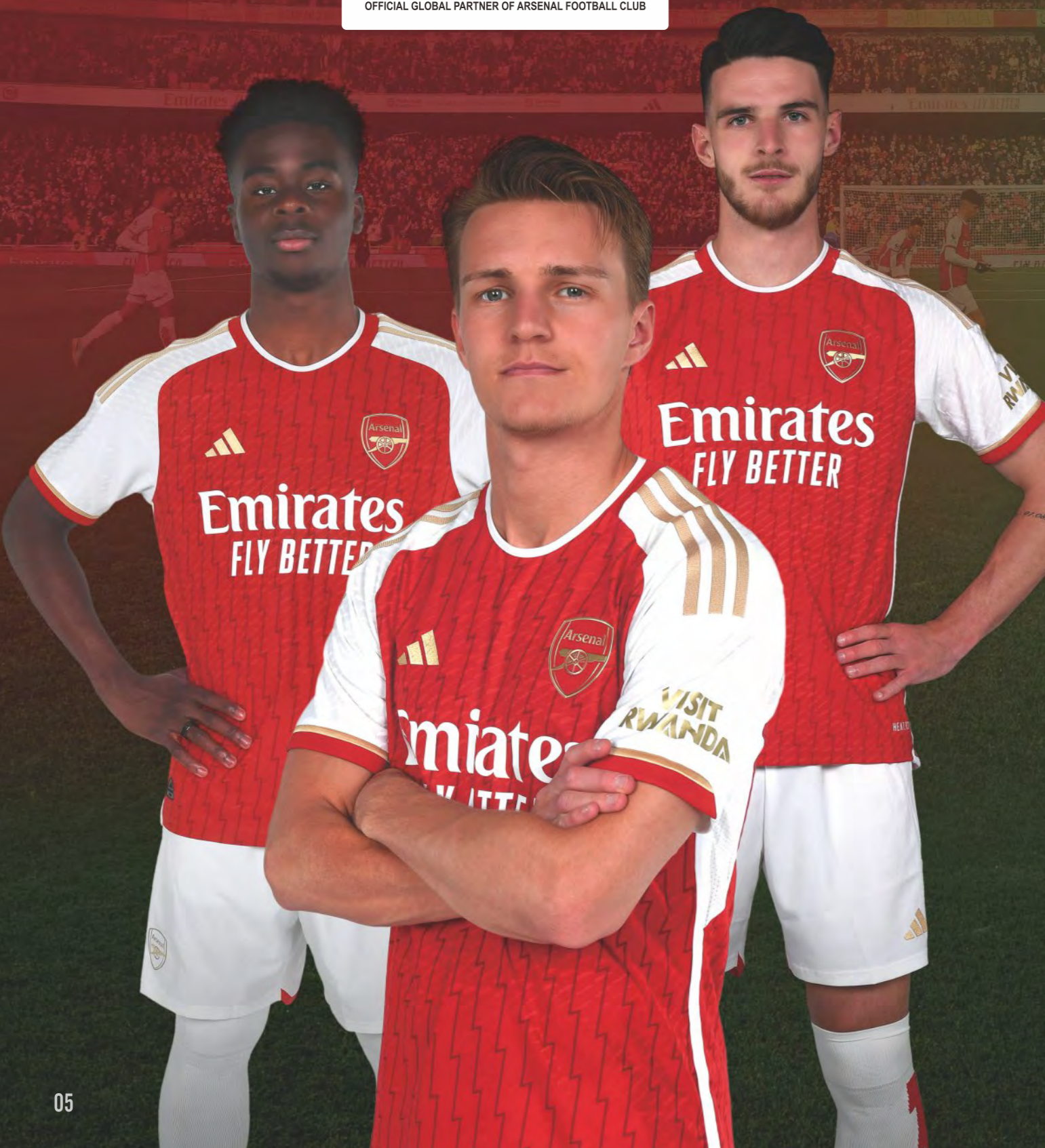


ZC-Rubber Indonesia
(Under Construction)



ZC-Rubber HQ
ZC-Rubber Tianjin
ZC-Rubber Chaoyang
ZC-Rubber Jiande
ZC-Rubber Qingquan
ZC-Rubber Yonggu
ZC-Rubber Anji
ZC-Rubber Jintan
ZC-Rubber Recycling
Tech. Co. Ltd.
Hangzhou ZC-Rubber
Auto Space Co. Ltd.

STRATEGIC COOPERATION



OE CUSTOMERS



KEY ACCOUNTS



KEY SUPPLIERS





Pre-Strain Contour Theory (PSCT)

Minimized tyre profile deformation



After more than 20 years of painstaking research, ZC-Rubber TBR Research Center has finally successfully developed the Pre-strain Contour theory (PSCT) and four technologies derived from this theory with independent

intellectual property rights. In 2020, the newly launched ZC-Rubber premium truck and bus tyres based on the theories and technologies have been recognized by the market.

- Tyre Simulation of Pre-stressing Force through FEA (Finite Elements Analysis)
- Simulation Iteration based on pre-set tyre profile
- Minimized tyre profile deformation when inflated

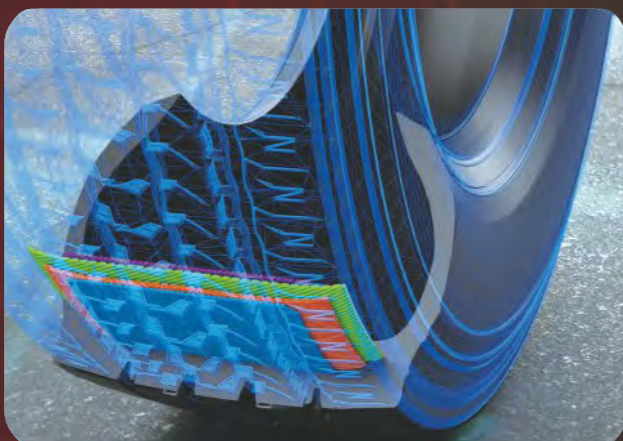
Pre-strain Contour Theory is a new truck and bus tyre design theory developed by ZC-Rubber. We conducted the simulation of real tyre performance under different scenarios and conditions of various commercial vehicle

models. Based on the new theory and core technologies, the tyre can achieve minimized profile deformation and heat generation when inflated and loaded, which greatly improves its tyre life and overall performance.

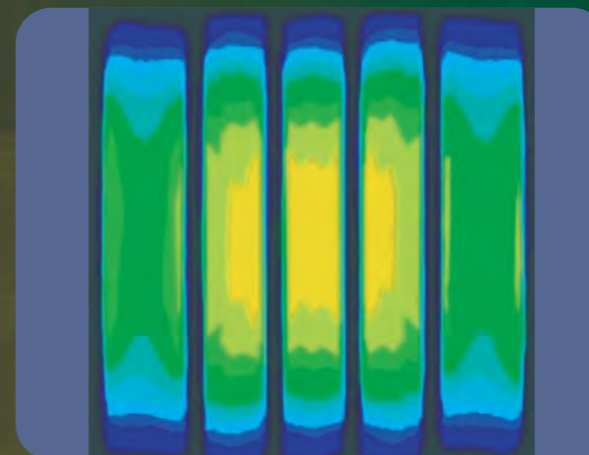
BTCT Belt Tension Control Technology (BTCT) - Enhanced tyre life and durability

- Reduced shear force among steel belts
- Tension improved at the end of belts but reduced at the center
- Reduced deformation at the end of belts at high speed

BTCT means Belt Tension Control Technology. Based on PSCT, the shear force among steel belts is greatly reduced. It improves the tension at the end of belts but reduces the tension at the center, thus ensuring the minimized tyre deformation at high speed. This features the crown with low heat generation and high strength, bringing a 20% improvement in durability and longer tyre life.



PDOT Pressure Distribution Optimization Technology (PDOT) - Longer mileage and higher fuel economy



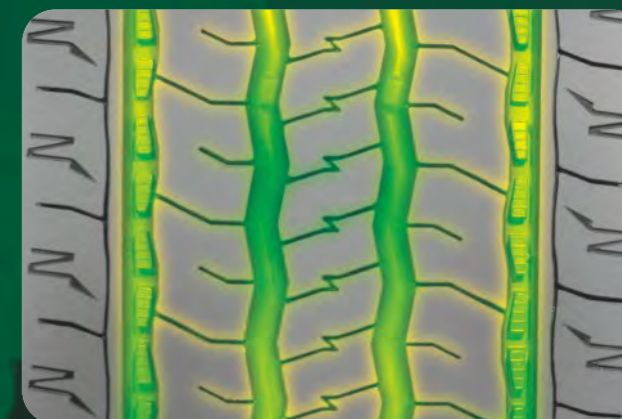
- Optimized Tyre Footprint and Better Contact Pressure Distribution
- Rectangular Footprint Shape for Even Pressure Distribution
- Reduced Tyre Slipping in Cornering
- Improved Tyre Life and Fuel Economy

The pressure distribution of the tyre footprint affects fuel consumption and treadwear. PDOT is used to optimize the tyre footprint and improve the contact pressure distribution. In a straight-line driving, the footprint maintains a rectangular shape for even pressure distributions; when cornering, it reduces slipping between the tyre and the ground. This improves your tyre life and fuel economy.

GSCT Groove Strain-stress Control Technology (GSCT) - Less occurrence of groove cracking in driving

- Controllable Groove Pattern Shape When Inflated
- Uniform Distribution of Pattern Groove Bottom Stress for Lower Heat Generation
- Less Occurrence of Groove Cracking in Driving

Groove Strain-stress Control Technology can control the groove width change when the tyre is inflated. This would reduce stress concentration in pattern groove bottom, thus reducing heat generation. It minimizes the occurrence of groove cracking and prolongs tyre life.



SSHT Shoulder Stiffness Hold Technology (SSHT) - Less uneven wear

- Less Uneven Wear of Tyre Better Tyre Inflation Profile through PSCT
- Reinforced Tyre Sidewall
- Optimized Tyre Footprint, Improved Contact Pressure Distribution and Reduced Heat Generation of Sidewall Deformation
- Less Uneven Wear of Tyre






Shoulder Stiffness Hold Technology brings the tyre inflation profile closer to the design profile. It greatly strengthens the tyre sidewall. Meanwhile, it optimizes tyre footprints, improves contact pressure distributions, and reduces the heat generated by sidewall deformation. This technology cuts the chances of sidewall bubbles and solves the problem of tyre uneven wear.





CONTENTS

ZC-RUBBER TRUCK & BUS TYRE

	-----	13
Long Haul		
	-----	32
Regional		
	-----	46
Mixed Service		
	-----	67
Urban		
	-----	71
Winter		

ROAD		POSITION	STEER/TRAILER	DRIVE	TRAILER
LONG HAUL			 AS898 AS858 AZ817 AS668 AZ670 AT586 AS678 AZ599 AS578 CR976A CR960A CR989	 AD818 AD733 AD713 AD751 CM335/A AD710/A CM983 AD757 AD781 AD528	 AT566 AT555 AT556 CR931 CR915
	REGIONAL			 AZ850 AZ828 CM958 AZ676 AZ534+ MZ679 AZ531 AZ675 AZ712 MD752 AZ655S AZ650 CM772 CM912 AZ589 AZ686 CR907 CR950	 AD756 CM980 CM987/E CM986
MIXED SERVICE		ON & OFF		 CR926+/B/D AT557 CM988 EZ573 CM998/+ EZ865 EZ861 EZ867 CM913 CM954 CM923 MD738 EZ356 EZ373 MD777 EZ591 EZ377 CB999 CB981 CB901 EZ372	 CM954 CM923 MD738 EZ356 EZ373 MD777 EZ591 EZ377 CB999 CB981 CB901 EZ372
	MINING		 EZ870 EZ310 CB972 CB919 CB905 CB332 EZ330	 EZ870 EZ310 CB972 CB919 CB905 CB332 EZ330	
URBAN			 CR906 II AZ675 AZ687	 MD703	
WINTER			 NS785 NZ780 NZ782 NZ787 NZ788	 ND783	

APPLICATION AND KEY FEATURE LEGEND

- Long Haul
- Regional
- Mixed Service
- Urban
- Winter

- Long distance journey with constant speed, less braking and accelerating
- Less fuel consumption and comfortable ride
- High mileage performance
- Shorter journey with frequent braking, accelerating and turning
- Improved road grip with maximum mileage
- Exceptional tough type

- Used both on and off road
- Heavy loads and outstanding durability
- Special protection against the damage caused by the road condition
- Frequent speed changes and turning
- Resistance to curb impact
- Excellent road grip and durable high mileage

- Contribute to safety and operating in winter conditions
- Outstanding grip performance on ice and snow road surface
- Stable handling during braking and turning

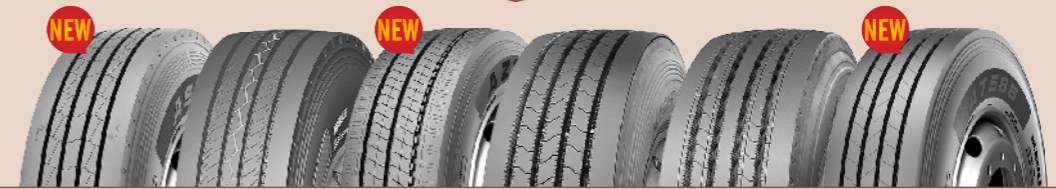
LONG HAUL



LONG HAUL

Long distance journey with constant speed and less braking and accelerating
 Less fuel consumption and comfortable ride
 High mileage performance

STEER/TRAILER



AS898 AS858 **NEW** AZ817 AS668 AZ670 AT586



AS678 **NEW** AZ599 AS578 CR976A CR960A CR989

DRIVE



NEW AD818 AD733 AD713 AD751 CM335/A AD710/A CM983 AD757 AD781 **NEW** AD528

TRAILER



AT566 AT555 AT556 CR931 CR915



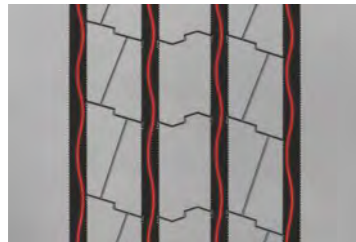
AS898



● : Recommendable ● : Available



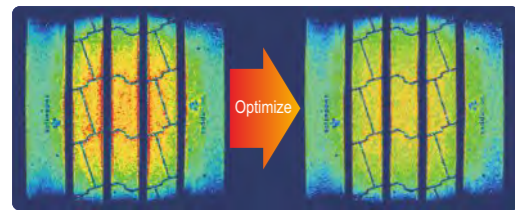
High mileage tyres suitable for long haul application (High mileage formula, high saturation, Large parameters)



The main ditch adopts a zigzag design with groove bottom patterns, Strengthen stone removal performance to avoid tyre malfunctions

Footprint

Finite element simulation analysis, More uniform distribution of tyre contact pressure, improve uneven wear performance

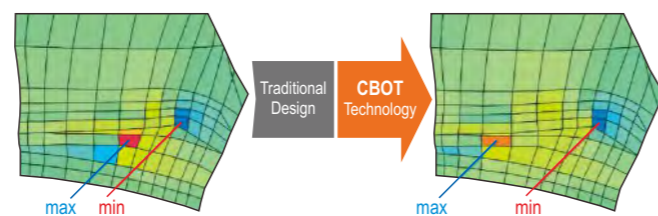


NEW

PSCT™
Design Concept

Belt Durability

Optimal belt gap minimize shearing force between the belts with ZC-Rubber's CBOT technology



AS858

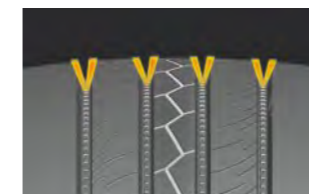


● : Recommendable ● : Available

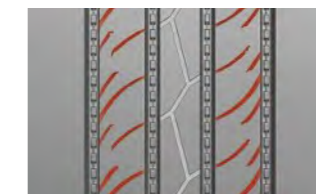
PSCT™
Design Concept

Brand new flagship tyre for long haul application with Longer mileage and higher fuel economy based on PSCT

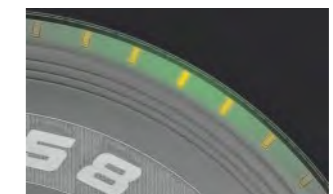
BTCT technology provides a rectangle footprint and even wear



V-shape groove design minimizes the occurrence of groove cracking



Deep siping design guarantee a stability driving through the whole tyre life



Shoulder heat dissipation design reduce tread rigidity and improve the durability of tyre

Size	LR / PR	Service index	Tread Depth (mm)	Standard Rim	Overall Diameter (mm)	Section Width (mm)	Max. Load Capacity at Cold Inflation Pressure							
							Single			Dual				
							(kg)	(lbs)	(kPa) (psi)	(kg)	(lbs)	(kPa) (psi)		
9.5R17.5	J/18	143/141J	13.0	6.75	840	234	2725	6005	875	128	2575	5675	875	128
215/75R17.5	H/16	135/133J	13.0	6.00	765	216	2180	4805	850	123	2060	4540	850	123
235/75R17.5	H/16	143/141J	13.5	6.75	792	236	2725	6005	875	128	2575	5675	875	128
11R22.5	H/16	148/145L	17.5	8.25	1054	279	3150	6940	850	123	2900	6390	850	123
12R22.5	J/18	152/149L	18.5	9.00	1085	300	3550	7830	930	135	3250	7160	930	135
295/80R22.5	J/18	152/149M	16.0	9.00	1044	298	3550	7830	900	131	3250	7160	900	131
315/80R22.5	J/18	154/151M(156/153L)	15.0	9.00	1076	312	3750	8270	830	120	3450	7610	830	120

● Made in China ● Made in Thailand

Size	LR / PR	Service index	Tread Depth (mm)	Standard Rim	Overall Diameter (mm)	Section Width (mm)	Max. Load Capacity at Cold Inflation Pressure							
							Single			Dual				
							(kg)	(lbs)	(kPa) (psi)	(kg)	(lbs)	(kPa) (psi)		
11.00R20	J/18	152/149K	16.0	8.0	1085	293	3550	7825	930	135	3250	7165	930	135
11R22.5	H/16	148/145L	17.5	8.25	1065	279	3150	6940	850	123	2900	6390	850	123
11R22.5	J/18	149/146L	17.5	8.25	1065	279	3250	7160	930	135	3000	6610	930	135
12R22.5	J/18	152/149L	18.0	9.00	1085	300	3550	7830	930	135	3250	7160	930	135

● Made in China ● Made in Thailand



NEW

- Advanced 5-Rib tread provides even wear and remarkable handling
- Hidden longitudinal ditch design, Collaborative with 3D three-dimensional steel sheets, Enhance the strength of adjacent pattern blocks, Increase tyre grip
- Shoulder longitudinal groove design with twists, Provide better handling stability, Gutter bottom adhesive nail design, Improve stone removal performance

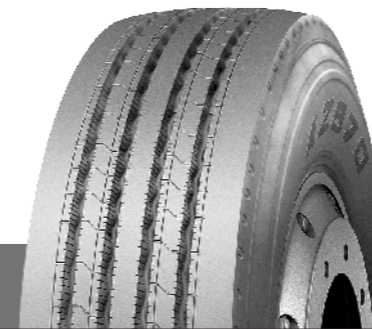


AZ817 PRO / AZ817

● : Recommendable
● : Available

Size	LR / PR	Service index	Tread Depth (mm)	Standard Rim	Overall Diameter (mm)	Section Width (mm)	Max. Load Capacity at Cold Inflation Pressure							
							Single				Dual			
							(kg)	(lbs)	(kPa)	(psi)	(kg)	(lbs)	(kPa)	(psi)
● 315/60R22.5(AZ817PRO)	L/20	154/150L(152/148M)	14.5	9.75	950	313	3750	8270	900	130	3350	7390	900	130
● 315/70R22.5	L/20	156/150L	14.5	9.00	1014	312	4000	8820	900	130	3350	7390	900	130

● Made in China



- Premium five-rib tread with various pitches to provide quiet and comfortable riding
- Stone ejection design reduces stone retention and casing penetration
- Computer aided casing design helps improve footprint for better mileage performance



AZ670

● : Recommendable ● : Available

Size	LR / PR	Service index	Tread Depth (mm)	Standard Rim	Overall Diameter (mm)	Section Width (mm)	Max. Load Capacity at Cold Inflation Pressure							
							Single				Dual			
							(kg)	(lbs)	(kPa)	(psi)	(kg)	(lbs)	(kPa)	(psi)
● 11R22.5	G/14	144/142M	16.0	8.25	1054	279	2800	6175	720	105	2650	5840	720	105
● 11R22.5	H/16	148/145M	16.0	8.25	1054	279	3150	6940	850	123	2900	6390	850	123
● 12R22.5	J/18	152/149L	16.0	9.00	1085	300	3550	7830	930	135	3250	7160	930	135
● 255/70R22.5	H/16	140/137M	15.0	7.50	930	255	2500	5510	830	120	2300	5070	830	120
● 295/80R22.5	H/16	150/147M	16.0	9.00	1044	298	3350	7390	830	120	3075	6780	830	120
● 295/80R22.5	J/18	152/149M	16.0	9.00	1044	298	3550	7830	900	131	3250	7160	900	131

● Made in China ● Made in Thailand



- Premium five-rib tread provides outstanding handling for steer application
- Decoupling grooves prevent uneven tread wear and ensure long tread life for long distance travel
- Wide and deep tread guarantee longer mileage with affordable cost and remarkable value



AS668

● : Recommendable ● : Available

Size	LR / PR	Service index	Tread Depth (mm)	Standard Rim	Overall Diameter (mm)	Section Width (mm)	Max. Load Capacity at Cold Inflation Pressure							
							Single				Dual			
							(kg)	(lbs)	(kPa)	(psi)	(kg)	(lbs)	(kPa)	(psi)
● 11R22.5	G/14	144/142M	17.0	8.25	1054	279	2800	6175	720	105	2650	5840	720	105
● 11R22.5	H/16	148/145L	17.0	8.25	1054	279	3150	6940	850	123	2900	6390	850	123
● 11R22.5	J/18	149/146L	17.0	8.25	1054	279	3250	7160	930	135	3000	6610	930	135
● 12R22.5	J/18	152/149L	17.5	9.00	1085	300	3550	7830	930	135	3250	7160	930	135
● 13R22.5	J/18	156/151K	18.0	9.75	1124	320	4000	8820	875	128	3450	7610	875	128
● 275/70R22.5	H/16	148/145L	15.0	8.25	958	276	3150	6940	900	130	2900	6395	900	130
● 295/75R22.5	G/14	144/141L	17.0	9.00	1014	298	2800	6175	760	110	2575	5675	760	110
● 295/80R22.5	H/16	150/147M	16.0	9.00	1044	298	3350	7390	830	120	3075	6780	830	120
● 295/80R22.5	J/18	152/149M	16.0	9.00	1044	298	3550	7830	900	131	3250	7160	900	131
● 315/80R22.5	J/18	154/151M(156/150L)	16.5	9.00	1076	312	3750	8270	830	120	3450	7610	830	120
● 315/80R22.5	L/20	157/154K	16.5	9.00	1076	312	4125	9090	900	130	3750	8270	900	130
● 11R24.5	G/14	146/143L	17.0	8.25	1104	279	3000	6610	720	105	2725	6005	720	105
● 11R24.5	H/16	149/146L	17.0	8.25	1116	279	3250	7160	830	120	3000	6610	830	120

● Made in China ● Made in Thailand



NEW

- High saturation pattern design, Improving tyre wear resistance, Significantly increase vehicle mileage
- The main ditch adopts a zigzag design with groove bottom patterns, Strengthen stone removal performance to avoid tyre malfunctions
- Design of circumferential drainage shallow ditch, Improve vehicle handling



AT586

● : Recommendable ● : Available

Size	LR / PR	Service index	Tread Depth (mm)	Standard Rim	Overall Diameter (mm)	Section Width (mm)	Max. Load Capacity at Cold Inflation Pressure							
							Single				Dual			
							(kg)	(lbs)	(kPa)	(psi)	(kg)	(lbs)	(kPa)	(psi)
● 315/80R22.5	J/18	154/151M(156/153L)	13.5	9.00	1076	312	3750	8270	830	120	3450	7610	830	120

● Made in China



- Applicable for steer and free-rolling wheel position
- Five ribs with four straight grooves for precise handling
- Special designed tyre casing for better mileage and more value for customers
- Cross rib sipes provide better wet traction and reduce external noise



AS678

● Recommendable ● Available



- Four wide tread grooves allows excellent water drainage
- Multi siping provides outstanding traction on both dry and wet road surfaces
- Computer designed tyre casing assures excellent footprint for extended tyre life



AZ599

● Recommendable ● Available

Size	LR / PR	Service index	Tread Depth (mm)	Standard Rim	Overall Diameter (mm)	Section Width (mm)	Max. Load Capacity at Cold Inflation Pressure							
							Single				Dual			
							(kg)	(lbs)	(kPa)	(psi)	(kg)	(lbs)	(kPa)	(psi)
● 11.00R20	J/18	152/149K	16.0	8.0	1085	293	3550	7825	930	135	3250	7165	930	135
● 11.00R22	H/16	152/149K	14.2	8.0	1122	288	3550	7825	830	120	3250	7165	830	120
● 9.5R17.5	G/14	129/127L	13.0	6.75	842	240	1850	4080	750	109	1750	3860	750	109
● 9.5R17.5	H/16	143/141J	13.0	6.75	842	240	2725	6005	875	128	2575	5675	875	128
● 225/80R17.5	H/16	123/122L	14.0	6.75	805	226	1550	3415	700	102	1500	3305	700	102
● 225/90R17.5	H/16	127/125L	13.0	6.75	851	226	1750	3860	700	102	1650	3640	700	102
● 11R22.5	G/14	144/142M	14.2	8.25	1054	279	2800	6175	720	105	2650	5840	720	105
● 11R22.5	H/16	146/143L	14.2	8.25	1054	279	3000	6610	720	105	2725	6005	720	105
● 11R22.5	H/16	148/145L	14.2	8.25	1054	279	3150	6940	850	123	2900	6390	850	123
● 255/70R22.5	H/16	140/137M	14.5	7.50	930	255	2500	5510	830	120	2300	5070	830	120
● 295/75R22.5	G/14	144/141L	14.2	9.00	1014	298	2800	6175	760	110	2575	5675	760	110
● 275/80R22.5	H/16	149/146M	14.0	8.25	1012	276	3250	7165	850	123	3000	6610	850	123
● 295/80R22.5	H/16	150/147M	15.0	9.00	1044	298	3350	7390	830	120	3075	6780	830	120
● 295/80R22.5	J/18	152/149M	15.0	9.00	1044	298	3550	7830	900	131	3250	7160	900	131
● 315/80R22.5	J/18	154/151M(156/153L)	15.0	9.00	1076	312	3750	8270	830	120	3450	7610	830	120
● 315/80R22.5	L/20	157/154K	15.0	9.00	1076	312	4125	9090	900	130	3750	8270	900	130
● 11R24.5	G/14	146/143L	14.2	8.25	1104	279	3000	6610	720	105	2725	6005	720	105
● 11R24.5	H/16	149/146L	14.2	8.25	1104	279	3250	7160	830	120	3000	6610	830	120
● 285/75R24.5	G/14	144/141L	14.2	8.25	1050	283	2800	6175	760	110	2575	5675	760	110

● Made in China ● Made in Thailand

● Made in China



- Improved close shoulder helps to improve even wear resulting in long tread life
- Straight simple rib pattern improves even wearing and efficient water evacuation for excellent wet traction and handling
- Cross rib sipes slice through water for solid control on wet roads



● : Recommendable ● : Available

CR960A



- Five ribs with four wide, straight grooves for precise handling and outstanding traction
- Decoupling tread design suitable for long-distance travel
- Applicable for steer and free-rolling wheel position



● : Recommendable ● : Available

CR989

Size	LR / PR	Service index	Tread Depth (mm)	Standard Rim	Overall Diameter (mm)	Section Width (mm)	Max. Load Capacity at Cold Inflation Pressure							
							Single				Dual			
							(kg)	(lbs)	(kPa)	(psi)	(kg)	(lbs)	(kPa)	(psi)
7.50R16	G/14	122/118L	12.0	6.00G	805	215	1500	3305	770	112	1320	2910	770	112
8.25R16	G/14	128/126L	13.0	6.50H	855	235	1800	3970	670	97	1700	3750	670	97
8.25R16	H/16	128/124L	13.0	6.50H	855	235	1800	3970	770	112	1600	3525	770	112
245/70R17.5	H/16	136/134M	13.0	7.50	789	248	2240	4940	850	123	2120	4675	850	123
245/70R17.5	J/18	143/141J	13.0	7.50	789	248	2725	6005	875	128	2575	5675	875	128
205/75R17.5	G/14	124/122M	12.0	6.00	753	205	1600	3525	750	109	1500	3305	750	109
215/75R17.5	H/16	135/133J	12.5	6.00	767	211	2180	4805	850	123	2060	4540	850	123
225/75R17.5	G/14	129/127M	12.5	6.75	783	226	1850	4080	725	105	1750	3860	725	105
235/75R17.5	G/14	132/130M	13.3	6.75	797	233	2000	4410	775	112	1900	4190	775	112
235/75R17.5	H/16	143/141J	13.3	6.75	797	233	2725	6005	875	128	2575	5675	875	128
8R19.5	F/12	124/122L	13.0	6.00	859	203	1600	3525	760	110	1500	3305	760	110
225/70R19.5	F/12	125/123M	13.0	6.75	811	226	1650	3640	660	95	1550	3415	660	95
245/70R19.5	G/14	133/131M	13.0	7.50	839	248	2060	4540	760	110	1950	4300	760	110
245/70R19.5	H/16	136/134M	13.0	7.50	839	248	2240	4940	830	120	2120	4675	830	120
265/70R19.5	H/16	140/138M	14.0	7.50	867	262	2500	5510	775	112	2360	5200	775	112
265/70R19.5	J/18	143/141J	14.0	7.50	867	262	2725	6005	850	123	2575	5675	850	123
285/70R19.5	H/16	146/144K	14.5	8.25	895	283	3000	6610	850	123	2800	6175	850	123
11R22.5	G/14	144/142L	14.2	8.25	1054	279	2800	6175	720	105	2650	5840	720	105
11R22.5	H/16	148/145M	14.2	8.25	1054	279	3150	6940	850	123	2900	6390	850	123
315/70R22.5	L/20	156/150L	15.0	9.00	1014	312	4000	8820	900	130	3350	7390	900	130
295/75R22.5	G/14	144/141L	14.2	9.00	1014	298	2800	6175	760	110	2575	5675	760	110
315/80R22.5	J/18	154/151M(156/150L)	15.0	9.00	1076	312	3750	8270	830	120	3450	7610	830	120
315/80R22.5	L/20	157/154K	15.0	9.00	1076	312	4125	9090	900	130	3750	8270	900	130
11R24.5	G/14	146/143L	14.2	8.25	1104	279	3000	6610	720	105	2725	6005	720	105
11R24.5	H/16	149/146L	14.2	8.25	1104	279	3250	7160	830	120	3000	6610	830	120
285/75R24.5	G/14	144/141L	14.2	8.25	1050	283	2800	6175	760	110	2575	5675	760	110

● Made in China ● Made in Thailand

Size	LR / PR	Service index	Tread Depth (mm)	Standard Rim	Overall Diameter (mm)	Section Width (mm)	Max. Load Capacity at Cold Inflation Pressure							
							Single				Dual			
							(kg)	(lbs)	(kPa)	(psi)	(kg)	(lbs)	(kPa)	(psi)
11R22.5	G/14	144/142L	14.2	8.25	1054	279	2800	6175	720	105	2650	5840	720	105
11R22.5	H/16	148/145M	14.2	8.25	1054	279	3150	6940	850	123	2900	6390	850	123
295/75R22.5	G/14	144/141L	14.2	9.00	1014	298	2800	6175	760	110	2575	5675	760	110
11R24.5	G/14	146/143L	15.0	8.25	1104	279	3000	6610	720	105	2725	6005	720	105
11R24.5	H/16	149/146L	15.0	8.25	1104	279	3250	7160	830	120	3000	6610	830	120
285/75R24.5	G/14	144/141L	15.0	8.25	1050	283	2800	6175	760	110	2575	5675	760	110

● Made in China ● Made in Thailand



AD818



● : Recommendable

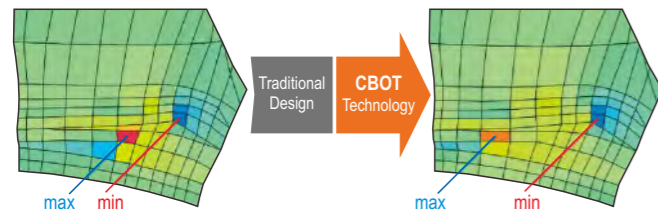


PSCT
Design Concept



- 1 Classic block pattern, Better driving performance and grip performance
- 2 Shoulder reinforcement design, Enhance durability of use
- 3 Wider tread, Higher saturation, High mileage formula to increase tyre mileage

Belt Durability



Optimal belt gap minimize shearing force between the belts with ZC-Rubber's CBOT technology

Footprint



Finite element simulation analysis, More uniform distribution of tyre contact pressure, improve uneven wear performance

Size	LR / PR	Service index	Tread Depth (mm)	Standard Rim	Overall Diameter (mm)	Section Width (mm)	Max. Load Capacity at Cold Inflation Pressure							
							Single			Dual				
							(kg)	(lbs)	(kPa) (psi)	(kg)	(lbs)	(kPa) (psi)		
295/60R22.5	J/18	150/147K	20.0	9.00	932	292	3350	7390	900	131	3075	6780	900	131
315/60R22.5	L/20	154/150K(152/148L)	20.0	9.75	956	315	3750	8270	900	130	3350	7390	900	130
315/70R22.5	L/20	154/150L(152/148M)	21.0	9.00	1020	312	3750	8270	900	130	3350	7390	900	130
295/80R22.5	J/18	152/149M	20.6	9.00	1050	298	3550	7830	900	131	3250	7160	900	131

● Made in China



- Ultra deep tread with robust tread blocks features excellent wet traction and longer tyre life
- Drive axle applicable providing lateral stability and multiple retreads
- Latest carcass technology guarantees superior footprint and enhances damage resistance



● : Recommendable

AD733

Size	LR / PR	Service index	Tread Depth (mm)	Standard Rim	Overall Diameter (mm)	Section Width (mm)	Max. Load Capacity at Cold Inflation Pressure							
							Single			Dual				
							(kg)	(lbs)	(kPa) (psi)	(kg)	(lbs)	(kPa) (psi)		
12R22.5	J/18	152/149L	23.0	9.00	1096	300	3550	7830	930	135	3250	7160	930	135
305/70R22.5	L/20	151/148M(153/150L)	22.0	9.00	1018	317	3450	7610	900	130	3150	6940	900	130
295/80R22.5	H/16	150/147M	20.6	9.00	1050	298	3350	7390	830	120	3075	6780	830	120
295/80R22.5	J/18	152/149M	20.6	9.00	1050	298	3550	7830	900	131	3250	7160	900	131

● Made in China ● Made in Thailand



- Ultra deep tread with robust tread blocks features excellent wet traction and longer tyre life
- Drive axle applicable providing lateral stability and multiple retreads
- Latest carcass technology guarantees superior footprint and enhances damage resistance



● : Recommendable

AD713/AD751

Size	LR / PR	Service index	Tread Depth (mm)	Standard Rim	Overall Diameter (mm)	Section Width (mm)	Max. Load Capacity at Cold Inflation Pressure							
							Single			Dual				
							(kg)	(lbs)	(kPa) (psi)	(kg)	(lbs)	(kPa) (psi)		
11R22.5(AD713)	G/14	144/142L	22.6	8.25	1065	279	2800	6175	720	105	2650	5840	720	105
11R22.5(AD713)	H/16	148/145L	22.6	8.25	1065	279	3150	6940	850	123	2900	6390	850	123
12R22.5(AD713/AD751)	J/18	152/149L	23.0	9.00	1096	300	3550	7830	930	135	3250	7160	930	135
275/70R22.5(AD713)	H/16	148/145L	18.5	8.25	958	276	3150	6940	900	130	2900	6395	900	130
295/80R22.5(AD713)	H/16	150/147M	20.0	9.00	1050	298	3350	7390	830	120	3075	6780	830	120
295/80R22.5(AD713)	J/18	152/149M	20.0	9.00	1050	298	3550	7830	900	131	3250	7160	900	131
315/80R22.5(AD713/AD751)	J/18	154/151M(156/150L)	22.5	9.00	1082	312	3750	8270	830	120	3450	7610	830	120
315/80R22.5(AD713)	L/20	157/154K	22.5	9.00	1076	312	4125	9090	900	130	3750	8270	900	130

● Made in China ● Made in Thailand



- Premium wide base drive tyre suitable for long haul application.
- Robust tread blocks offer outstanding traction on both wet and dry road condition.
- Enhanced tyre carcass guarantees lateral stability, longer mileage and easy retreadability



• : Recommendable

AD781

Size	LR / PR	Service index	Tread Depth (mm)	Standard Rim	Overall Diameter (mm)	Section Width (mm)	Max. Load Capacity at Cold Inflation Pressure							
							Single				Dual			
							(kg)	(lbs)	(kPa)	(psi)	(kg)	(lbs)	(kPa)	(psi)
445/50R22.5	L/20	161L	21.2	14.00	1018	445	4625	10200	830	120	-	-	-	-

• Made in China • Made in Thailand



- Wide base trailer tyre specially designed for trailer service
- Special compound and strong tyre casing promise excellent tread wear and longer mileage
- Straight grooves help to reduce rolling resistance and improve fuel efficiency



• : Recommendable

AT555

Size	LR / PR	Service index	Tread Depth (mm)	Standard Rim	Overall Diameter (mm)	Section Width (mm)	Max. Load Capacity at Cold Inflation Pressure							
							Single				Dual			
							(kg)	(lbs)	(kPa)	(psi)	(kg)	(lbs)	(kPa)	(psi)
435/50R19.5	L/20	160J(156K)	13.5	14.00	931	438	4500	9920	900	131	-	-	-	-
385/55R19.5	H/16	156J	15.0	12.25	919	386	4000	8820	900	131	-	-	-	-
435/50R22.5	M/22	164J	12.8	14.00	1008	434	5000	11025	900	131	-	-	-	-

• Made in China • Made in Thailand



NEW

- Designed to provide exceptional Performance and Life in Line haul Drive applications
- Shoulder reinforcement design, Enhance durability of use
- Special designed tread grooves reduce stone retention for extended tyre life



• : Recommendable

AD528

Size	LR / PR	Service index	Tread Depth (mm)	Standard Rim	Overall Diameter (mm)	Section Width (mm)	Max. Load Capacity at Cold Inflation Pressure							
							Single				Dual			
							(kg)	(lbs)	(kPa)	(psi)	(kg)	(lbs)	(kPa)	(psi)
275/80R22.5	H/16	149/146M	18.0	8.25	1012	276	3250	7165	850	123	3000	6610	850	123
295/80R22.5	J/18	152/149M	18.0	9.00	1050	298	3550	7830	900	131	3250	7160	900	131

• Made in China



- Wide base trailer tyre specially designed for trailer service
- Special compound and strong tyre casing promise excellent tread wear and longer mileage
- Straight grooves help to reduce rolling resistance and improve fuel efficiency



• : Recommendable

AT556

Size	LR / PR	Service index	Tread Depth (mm)	Standard Rim	Overall Diameter (mm)	Section Width (mm)	Max. Load Capacity at Cold Inflation Pressure							
							Single				Dual			
							(kg)	(lbs)	(kPa)	(psi)	(kg)	(lbs)	(kPa)	(psi)
445/45R19.5	L/20	160J(156K)	14.3	15.00	895	446	4500	9920	900	131	-	-	-	-

• Made in China • Made in Thailand



- Wide base super single tyre applicable for both steer and trailer service
- Computer designed tread structure provide even wear with less pressure on the road
- Long life tread compound with less heating enhance the original tread life
- Strong steel belt improves the casing durability and promote multiple retreads



• : Recommendable

AT566

Size	LR / PR	Service index	Tread Depth (mm)	Standard Rim	Overall Diameter (mm)	Section Width (mm)	Max. Load Capacity at Cold Inflation Pressure							
							Single				Dual			
							(kg)	(lbs)	(kPa)	(psi)	(kg)	(lbs)	(kPa)	(psi)
445/50R22.5	L/20	161L	13.1	14.00	1018	445	4625	10200	830	120	-	-	-	-

• Made in China • Made in Thailand



- Wide base multi-rib trailer tyres with durable compound to deliver excellent value
- Strong casing structure offers multiple retreads and lower total cost
- Improved tread design promises outstanding stability with optimized footprint and better tyre life



● : Recommendable

CR931

Size	LR / PR	Service index	Tread Depth (mm)	Standard Rim	Overall Diameter (mm)	Section Width (mm)	Max. Load Capacity at Cold Inflation Pressure							
							Single				Dual			
				(kg)	(lbs)	(kPa)	(psi)	(kg)	(lbs)	(kPa)	(psi)			
● 385/65R22.5	J/18	158L(160K)	15.5	11.75	1072	389	4250	9370	850	125	-	-	-	-
● 385/65R22.5	L/20	160K(158L)	15.5	11.75	1072	389	4500	9920	900	130	-	-	-	-
● 425/65R22.5	L/20	165K	15.0	12.25	1124	430	5150	11400	830	120	-	-	-	-
● 445/65R22.5	L/20	169K	15.0	13.00	1150	444	5800	12775	900	130	-	-	-	-

● Made in China ● Made in Thailand



- Cool-running compound construction reduces the energy generated within the tread for low rolling resistance
- Shallow tread depth promotes low rolling resistance for fuel economy and long even wear
- Four wide grooves provide all-season performance on wet and dry roads

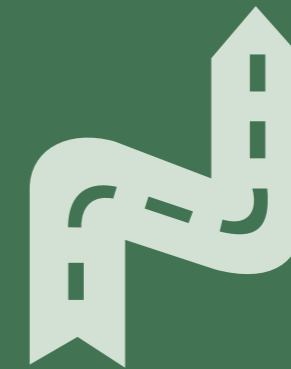


● : Recommendable

CR915

Size	LR / PR	Service index	Tread Depth (mm)	Standard Rim	Overall Diameter (mm)	Section Width (mm)	Max. Load Capacity at Cold Inflation Pressure							
							Single				Dual			
				(kg)	(lbs)	(kPa)	(psi)	(kg)	(lbs)	(kPa)	(psi)			
● 11R22.5	G/14	144/142M	11.0	8.25	1054	279	2800	6175	720	105	2650	5840	720	105
● 11R22.5	H/16	148/145M	11.0	8.25	1054	279	3150	6940	850	123	2900	6390	850	123
● 255/70R22.5	H/16	140/137L	11.0	7.50	930	255	2500	5510	830	120	2300	5070	830	120
● 295/75R22.5	G/14	144/141M	11.0	9.00	1014	298	2800	6175	760	110	2575	5675	760	110

● Made in China ● Made in Thailand



REGIONAL

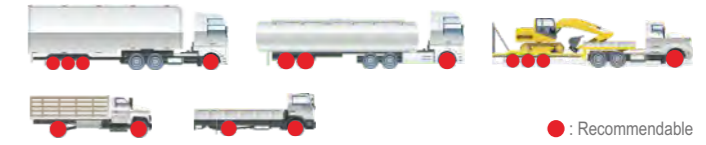
Shorter journey with frequent braking, accelerating and turning

Improved road grip with maximum mileage

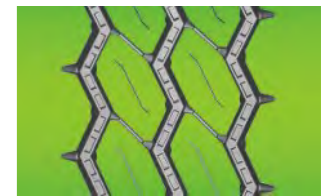
Exceptional tough type

REGIONAL

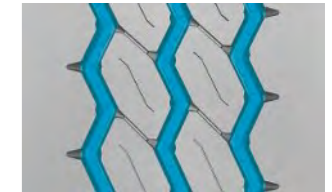
AZ850



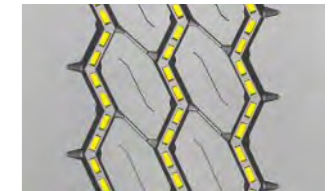
Brand new flagship tyre for regional application with Less uneven wear and enhanced durability based on PSCT GSCT technology minimizes the occurrence of groove cracking and prolongs tyre life



Wider and deeper tread helps provide long tread life on various road surface



3 zigzag grooves and multi-angular sipes Improve traction and braking performance



Stone ejector in the groove protect belt from stone drilling

STEER/TRAILER



DRIVE



TRAILER



	Size	LR / PR	Service index	Tread Depth (mm)	Standard Rim	Overall Diameter (mm)	Section Width (mm)	Max. Load Capacity at Cold Inflation Pressure							
								Single				Dual			
								(kg)	(lbs)	(kPa)	(psi)	(kg)	(lbs)	(kPa)	(psi)
●	7.00R16	G/14	118/114M	10.0	6.50H	855	235	1800	2910	770	112	1180	2600	770	112
●	7.50R16	G/14	122/118L	13.0	6.00G	215	805	1500	3305	770	112	1320	2910	770	112
●	8.25R16	H/16	128/124L	15.0	6.50H	235	855	1800	3970	770	112	1600	3525	770	112
●	8.25R20	H/16	139/137K	15.0	6.5	974	236	2430	5360	930	135	2300	5070	930	135
●	9.00R20	H/16	144/142K	15.5	7.0	1019	259	2800	6175	900	130	2650	5840	900	130
●	10.00R20	J/18	149/146J	15.5	7.5	1054	278	3250	7160	930	135	3000	6610	930	135
●	11.00R20	J/18	152/149K	16.5	8.0	1085	293	3550	7825	930	135	3250	7165	930	135
●	12.00R20	J/18	154/151K	17.5	8.5	1125	315	3750	8270	830	120	3450	7610	830	120
●	12.00R20	L/20	156/153J	17.5	8.5	1125	315	4000	8820	900	131	3650	8050	900	131
●	265/55R19.5	G/14	132/130J	12.0	8.25	262	867	2000	4400	760	110	1900	4190	760	110
●	11R22.5	H/16	148/145L	17.0	8.25	1054	279	3150	6940	850	123	2900	6390	850	123
●	12R22.5	J/18	152/149L	18.0	9.00	1085	300	3550	7830	930	135	3250	7160	930	135
●	13R22.5	J/18	156/151K	20.0	9.75	1124	320	4000	8820	875	128	3450	7610	875	128
●	295/80R22.5	J/18	152/149M	18.0	9.00	1050	298	3550	7830	900	131	3250	7160	900	131



NEW

- Strong tyre carcass offers lateral durability for regional application
- Micro tortuous pattern groove design, Horizontal shallow ditch design, Ensure tyre grip while reducing rolling resistance, Reduce fuel consumption, energy conservation and environmental protection
- Wide tread width offers more stable driving feel



● : Recommendable ● : Available

AT532

Size	LR / PR	Service index	Tread Depth (mm)	Standard Rim	Overall Diameter (mm)	Section Width (mm)	Max. Load Capacity at Cold Inflation Pressure							
							Single				Dual			
							(kg)	(lbs)	(kPa)	(psi)	(kg)	(lbs)	(kPa)	(psi)
385/65R22.5	L/20	160K	15.5	11.75	1072	389	4500	9920	900	130	-	-	-	-

● Made in China



NEW

- High saturation pattern design, Improving tyre wear resistance, Significantly increase vehicle mileage
- Finite element simulation analysis, More uniform distribution of tyre contact pressure, improve uneven wear performance
- Special formula design, Greatly reduces rolling resistance



● : Recommendable ● : Available

AT512

Size	LR / PR	Service index	Tread Depth (mm)	Standard Rim	Overall Diameter (mm)	Section Width (mm)	Max. Load Capacity at Cold Inflation Pressure							
							Single				Dual			
							(kg)	(lbs)	(kPa)	(psi)	(kg)	(lbs)	(kPa)	(psi)
385/65R22.5	L/20	160K	15.5	11.75	1072	389	4500	9920	900	130	-	-	-	-

● Made in Thailand



MIXED SERVICE

Used both on and off road
 Heavy loads and outstanding durability
 Special protection against the damage caused by the road condition

MIXED SERVICE

ON & OFF



CR926+/B/D AT557 CM988 EZ573



CM998+/ EZ861 EZ865 EZ867 CM913 CM954 CM923 MD738



EZ356 EZ373 MD777 EZ591 EZ377 CB999 CB981 CB901 EZ372

MINING

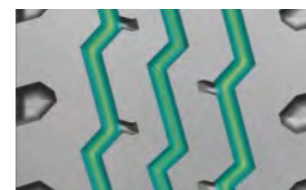


EZ870 EZ310 CB972 CB919 CB905 CB332 EZ330

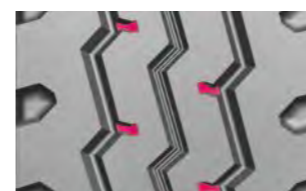
CR926+



Upgraded classic tyre for ON&OFF application with Longer mileage and Enhanced durability based on PSCT BTCT technology reduce deformation at the end of belt at high speed



3 circumferential grooves ensures good directional stability, even wear and smooth ride



Heavy siping provides good braking stability and high lateral traction on wet and dry surface



Sidewall reinforcing ribs protects against impacts and scuffing



Size	LR / PR	Service index	Tread Depth (mm)	Standard Rim	Overall Diameter (mm)	Section Width (mm)	Max. Load Capacity at Cold Inflation Pressure							
							Single		Dual		Dual			
							(kg)	(lbs)	(kPa)	(psi)	(kg)	(lbs)	(kPa)	(psi)
8.25R20	H/16	139/137L	15.0	6.5	974	236	2430	5360	930	135	2300	5070	930	135
9.00R20	H/16	144/142K	15.5	7.0	1019	259	2800	6175	900	130	2650	5840	900	130
10.00R20	H/16	146/143K	16.0	7.5	1054	278	3000	6610	830	120	2725	6005	830	120
10.00R20	J/18	149/146J	16.0	7.5	1054	278	3250	7160	930	135	3000	6610	930	135
11.00R20	J/18	152/149K	16.0	8.0	1085	293	3550	7825	930	135	3250	7165	930	135
12.00R20	J/18	154/151K	17.5	8.5	1125	315	3750	8270	830	120	3450	7610	830	120
12.00R20	L/20	156/153J	17.5	8.5	1125	315	4000	8820	900	131	3650	8050	900	131
11R22.5	H/16	148/145L	15.5	8.25	1054	279	3150	6940	850	123	2900	6390	850	123
12R22.5	J/18	152/149L	16.0	9.00	1085	300	3550	7830	930	135	3250	7160	930	135

★ Made in China



- Aggressive block design provides outstanding traction on rough roads
- Wide tread and special tread compounds resist chipping, chunking, and tearing
- Durable tyre casing for heavy loads
- Applicable for low speed use. Maximum speed shall be limited to 70 km/h in winter and 50 km/h in summer



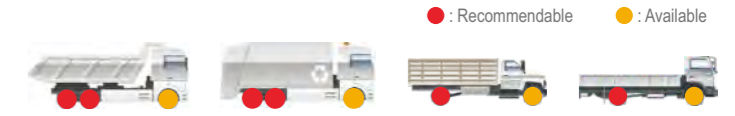
• : Recommendable • : Available

CM998

Size	LR / PR	Service index	Tread Depth (mm)	Standard Rim	Overall Diameter (mm)	Section Width (mm)	Max. Load Capacity at Cold Inflation Pressure							
							Single				Dual			
							(kg)	(lbs)	(kPa)	(psi)	(kg)	(lbs)	(kPa)	(psi)
• 7.00R16	G/14	118/114L	15.5	5.50F	785	200	1320	2910	770	112	1180	2600	770	112
• 7.50R16	G/14	122/118L	16.0	6.00G	815	215	1500	3305	770	112	1320	2910	770	112
• 8.25R16	G/14	128/126L	16.5	6.50H	865	235	1800	3970	670	97	1700	3750	670	97
• 8.25R16	H/16	128/124L	16.5	6.50H	865	235	1800	3970	770	112	1600	3525	770	112
• 8.25R20	H/16	139/137K	16.5	6.5	974	236	2430	5360	930	135	2300	5070	930	135
• 9.00R20	H/16	144/142K	17.0	7.0	1019	259	2800	6175	900	130	2650	5840	900	130
• 10.00R20	H/16	146/143K	18.0	7.5	1054	278	3000	6610	830	120	2725	6005	830	120
• 10.00R20	J/18	149/146J	18.0	7.5	1054	278	3250	7160	930	135	3000	6610	930	135
• 11.00R20	J/18	152/149J	19.0	8.0	1085	293	3550	7825	930	135	3250	7165	930	135
• 12.00R20	J/18	154/151K	20.5	8.5	1125	315	3750	8270	830	120	3450	7610	830	120
• 12.00R20	L/20	156/153J	20.5	8.5	1125	315	4000	8820	900	131	3650	8050	900	131

• Made in China • Made in Thailand

EZ861



• : Recommendable • : Available



Brand new flagship tyre for on&off application with Less sidewall deformation and enhanced tyre life based on PSCT Cutting resistance compound helps resist chipping, chunking and tearing for a better mileage



Dual tie bars center block ensure the tyre stability in all driving conditions



Stone rejection design reduces stone retention and maximize casing durability



Optimized sipes distribution and open shoulder design improve the heat resistance performance

Size	LR / PR	Service index	Tread Depth (mm)	Standard Rim	Overall Diameter (mm)	Section Width (mm)	Max. Load Capacity at Cold Inflation Pressure							
							Single				Dual			
							(kg)	(lbs)	(kPa)	(psi)	(kg)	(lbs)	(kPa)	(psi)
• 12.00R20	J/18	154/151K	18.5	8.5	1136	315	3750	8270	830	120	3450	7610	830	120
• 12.00R20	L/20	156/153J	18.5	8.5	1136	315	4000	8820	900	131	3650	8050	900	131

• Made in China



Brand new flagship tyre for on&off application with Less sidewall deformation and enhanced tyre life based on PSCT

Cutting resistance compound helps resist chipping, chunking and tearing for a better mileage

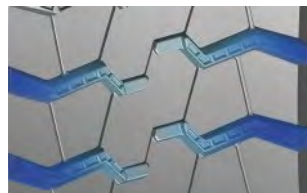


EZ865

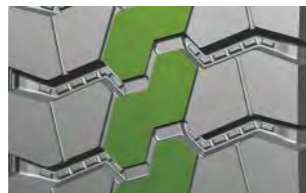
● : Recommendable ● : Available

Size	LR / PR	Service index	Tread Depth (mm)	Standard Rim	Overall Diameter (mm)	Section Width (mm)	Max. Load Capacity at Cold Inflation Pressure							
							Single				Dual			
							(kg)	(lbs)	(kPa)	(psi)	(kg)	(lbs)	(kPa)	(psi)
● 8.25R20	H/16	139/137K	16.0	6.5	974	236	2430	5360	930	135	2300	5070	930	135
● 9.00R20	H/16	144/142K	16.0	7.0	1019	259	2800	6175	900	130	2650	5840	900	130
● 10.00R20	J/18	149/146J	19.0	7.5	1054	278	3250	7160	930	135	3000	6610	930	135
● 11.00R20	J/18	152/149K	19.0	8.0	1085	293	3550	7825	930	135	3250	7165	930	135
● 12.00R20	J/18	154/151K	20.0	8.5	1136	315	3750	8270	830	120	3450	7610	830	120
● 12.00R20	L/20	156/153J	20.0	8.5	1136	315	4000	8820	900	131	3650	8050	900	131
● 12R22.5	J/18	152/149K	20.5	9.00	1085	300	3550	7830	930	135	3250	7160	930	135

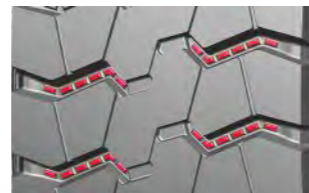
● Made in China ● Made in Thailand



Robust open shoulder provide outstanding traction and self-cleaning ability



Continuous center block pattern guarantee a stability driving in on&off road



Stone rejection design reduces stone retention and maximize casing durability

EZ867



● : Recommendable ● : Available

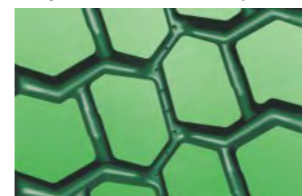


Brand new flagship tyre for on&off application with Less sidewall deformation and enhanced tyre life based on PSCT

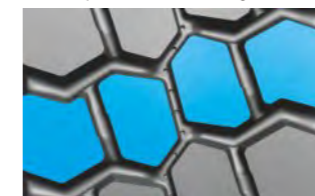
Cutting resistance compound helps resist chipping, chunking and tearing for a better mileage



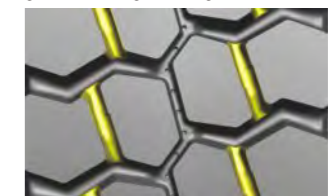
Width and high rubber volume tread design ensure a remarkable tyre life



Polygonal block pattern provides excellent traction performance on rough roads



Integrated tie bars prevents stone drilling and guarantee longer mileage



Size	LR / PR	Service index	Tread Depth (mm)	Standard Rim	Overall Diameter (mm)	Section Width (mm)	Max. Load Capacity at Cold Inflation Pressure							
							Single				Dual			
							(kg)	(lbs)	(kPa)	(psi)	(kg)	(lbs)	(kPa)	(psi)
● 7.00R16	G/14	118/114L	18.5	6.50H	865	235	1800	2910	770	112	1180	2600	770	112
● 8.25R16	H/16	128/124J	18.5	6.50H	235	865	1800	3970	770	112	1600	3525	770	112
● 8.25R20	H/16	139/137K	16.0	6.5	974	236	2430	5360	930	135	2300	5070	930	135
● 9.00R20	H/16	144/142K	18.0	7.0	1019	259	2800	6175	900	130	2650	5840	900	130
● 10.00R20	J/18	149/146J	19.0	7.5	1054	278	3250	7160	930	135	3000	6610	930	135
● 11.00R20	J/18	152/149K	22.0	8.0	1085	293	3550	7825	930	135	3250	7165	930	135
● 12.00R20	J/18	154/151K	22.0	8.5	1136	315	3750	8270	830	120	3450	7610	830	120
● 12.00R20	L/20	156/153J	22.0	8.5	1136	315	4000	8820	900	131	3650	8050	900	131
● 12R22.5	J/18	152/149K	22.0	9.00	1096	300	3550	7830	930	135	3250	7160	930	135
● 13R22.5	J/18	156/151K	22.0	9.75	1124	320	3750	8270	830	120	3450	7610	830	120

● Made in China ● Made in Thailand



URBAN

Frequent speed changes and turning
Resistance to curb impact
Excellent road grip and durable high mileage



STEER/TRAILER



CR906II

AZ675

AZ687

DRIVE



MD703



- Four rib tread pattern provides uniform wear and excellent traction on wet and dry road.
- Deep and wide tread enhances mileage for exceptionally long tyre life
- Reinforced shoulder and steel sidewall help deliver long casing life and retreadability
- Sidewall protector ribs help resist sidewall damage from turning, backing and braking when used in urban neighborhoods.
- Cool-running compound delivers low rolling resistance meaning more fuel efficiency



● : Recommendable

CR906/CR906II

Size	LR / PR	Service index	Tread Depth (mm)	Standard Rim	Overall Diameter (mm)	Section Width (mm)	Max. Load Capacity at Cold Inflation Pressure							
							Single				Dual			
							(kg)	(lbs)	(kPa)	(psi)	(kg)	(lbs)	(kPa)	(psi)
11R22.5(CR906II)	H/16	144/142J	20.0	8.25	1065	279	2800	6175	720	105	2650	5840	720	105
11R22.5(CR906II)	J/18	148/145J	20.0	8.25	1065	279	3150	6940	850	123	2900	6390	850	123
255/70R22.5(CR906)	H/16	140/137J	17.5	7.50	936	255	2500	5510	830	120	2300	5070	830	120
275/70R22.5(CR906II)	H/16	148/145J(152/148F)	20.0	8.25	964	276	3150	6940	900	130	2900	6395	900	130
275/80R22.5(CR906)	H/16	149/146J	19.0	8.25	1012	276	3250	7165	850	123	3000	6610	850	123
295/80R22.5(CR906)	H/16	150/147M	19.0	9.00	1050	298	3350	7390	830	120	3075	6780	830	120
295/80R22.5(CR906)	J/18	152/149L	19.0	9.00	1050	298	3550	7830	900	131	3250	7160	900	131

● Made in China ● Made in Thailand



- Deep tread depth and optimised rib width ensures outstanding mileage performance
- Zig-zag groove provides excellent traction and braking
- 3D siping helps improved traction and even wear.
- Excellent sidewall protection minimizes scuff damage from turning and braking



● : Recommendable

AZ687

Size	LR / PR	Service index	Tread Depth (mm)	Standard Rim	Overall Diameter (mm)	Section Width (mm)	Max. Load Capacity at Cold Inflation Pressure							
							Single				Dual			
							(kg)	(lbs)	(kPa)	(psi)	(kg)	(lbs)	(kPa)	(psi)
11R22.5	G/14	144/142J	20.6	8.25	1065	279	2800	6175	720	105	2650	5840	720	105
11R22.5	H/16	148/145J	20.6	8.25	1065	279	3150	6940	850	123	2900	6390	850	123

● Made in China



- Excellent sidewall protection minimizes scuff damage from turning and braking
- Extra deep tread for long tyre life and high pattern volume
- The zig-zag rib provide outstanding traction on city bus application



● : Recommendable

AZ675

Size	LR / PR	Service index	Tread Depth (mm)	Standard Rim	Overall Diameter (mm)	Section Width (mm)	Max. Load Capacity at Cold Inflation Pressure							
							Single				Dual			
							(kg)	(lbs)	(kPa)	(psi)	(kg)	(lbs)	(kPa)	(psi)
305/70R22.5	L/20	153/150J	19.0	9.00	1018	317	3650	8050	900	130	3350	7390	900	130

● Made in China



- Extra deep tread for long tyre life with excellent retreadability
- Zigzag main grooves provide improved traction and braking performance
- Excellent sidewall protection minimizes scuff damage from turning and braking



● : Recommendable

MD703

Size	LR / PR	Service index	Tread Depth (mm)	Standard Rim	Overall Diameter (mm)	Section Width (mm)	Max. Load Capacity at Cold Inflation Pressure							
							Single				Dual			
							(kg)	(lbs)	(kPa)	(psi)	(kg)	(lbs)	(kPa)	(psi)
11R22.5	G/14	144/142J	20.6	8.25	1065	279	2800	6175	720	105	2650	5840	720	105
11R22.5	H/16	148/145J	20.6	8.25	1065	279	3150	6940	850	123	2900	6390	850	123

● Made in China



WINTER

Contribute to safety and operating in winter conditions
Outstanding grip performance on ice and snow road surface
Stable handling during braking and turning



STEER/TRAILER



NS785

NZ780

NZ782

NZ787

NZ788

DRIVE



ND783



WINTER

ZC-RUBBER TRUCK & BUS TYRE CATALOG



- Wide and deep circumferential grooves enhances removal of snow and ice
- Specific tread compound keep rubber softness in low temperature with good performance
- Wide tread with advanced block and sipe design provides extra traction for snow and ice road conditions



• : Recommendable

NS785

Size	LR / PR	Service index	Tread Depth (mm)	Standard Rim	Overall Diameter (mm)	Section Width (mm)	Max. Load Capacity at Cold Inflation Pressure							
							Single				Dual			
							(kg)	(lbs)	(kPa)	(psi)	(kg)	(lbs)	(kPa)	(psi)
225/80R17.5	H/16	123/122L	15.0	6.75	811	226	1550	3415	700	102	1500	3305	700	102
245/70R19.5	H/16	136/134J	18.5	7.50	845	248	2240	4940	830	120	2120	4675	830	120
265/70R19.5	H/16	140/138J	19.5	7.50	867	262	2500	5510	775	112	2360	5200	775	112
385/55R22.5	L/20	160K(158L)	15.0	12.25	996	386	4500	9920	900	130	-	-	-	-
385/65R22.5	L/20	160K	15.0	11.75	1070	394	4500	9920	900	130	-	-	-	-
295/80R22.5	J/18	154/149L	18.0	9.00	1050	298	3750	8270	900	131	3250	7160	900	131
315/70R22.5	L/20	156/150K(152/148L)	17.0	9.00	1020	312	4000	8820	900	130	3350	7390	900	130
315/80R22.5	J/18	154/151M(156/153L)	18.0	9.00	1076	312	3750	8270	830	120	3450	7610	830	120
315/80R22.5	L/20	157/154K	18.0	9.00	1076	312	4125	9090	900	130	3750	8270	900	130

• Made in China • Made in Thailand



- Strong biting edges guarantee excellent traction on dry and slippery road surface, especially in winter
- Specific tread compound offer good mileage without scarifying wet traction
- Wide open shoulder deliver additional traction without compromising tread life



• : Recommendable

NZ780

Size	LR / PR	Service index	Tread Depth (mm)	Standard Rim	Overall Diameter (mm)	Section Width (mm)	Max. Load Capacity at Cold Inflation Pressure							
							Single				Dual			
							(kg)	(lbs)	(kPa)	(psi)	(kg)	(lbs)	(kPa)	(psi)
6.50R16	F/12	110/105L	13.5	5.50F	750	185	1060	2335	670	97	925	2040	670	97
7.00R16	G/14	118/114L	14.0	5.50F	785	200	1320	2910	770	112	1180	2600	770	112
235/75R17.5	G/14	143/141J	16.0	6.75	797	242	2725	6005	875	128	2575	5675	875	128
225/70R19.5	G/14	128/126N	16.0	6.75	226	811	1800	3970	760	110	1700	3750	760	110

• Made in China



- Wide open shoulder deliver additional traction without compromising tread life
- Specific tread compound keep rubber softness in low temperature with good performance
- Studable tread design provides extra traction for snow and ice road conditions



• : Recommendable

ND783

Size	LR / PR	Service index	Tread Depth (mm)	Standard Rim	Overall Diameter (mm)	Section Width (mm)	Max. Load Capacity at Cold Inflation Pressure							
							Single				Dual			
							(kg)	(lbs)	(kPa)	(psi)	(kg)	(lbs)	(kPa)	(psi)
295/80R22.5	J/18	154/149L	21.0	9.00	1050	298	3750	8270	900	131	3250	7160	900	131
315/70R22.5	L/20	154/150K(152/148L)	19.0	9.00	1020	312	3750	8250	900	130	3350	7390	900	130
315/80R22.5	J/18	156/153K(154/151L)	21.0	9.00	1082	312	4000	8820	850	123	3650	8050	850	123
315/80R22.5	L/20	157/154J	21.0	9.00	1082	312	4125	9090	900	130	3750	8270	900	130

• Made in Thailand



- Strong biting edges guarantee excellent traction on dry and slippery road surface, especially in winter
- Specific tread compound offer good mileage without scarifying wet traction
- Wide open shoulder deliver additional traction without compromising tread life



• : Recommendable • : Available

NZ782

Size	LR / PR	Service index	Tread Depth (mm)	Standard Rim	Overall Diameter (mm)	Section Width (mm)	Max. Load Capacity at Cold Inflation Pressure							
							Single				Dual			
							(kg)	(lbs)	(kPa)	(psi)	(kg)	(lbs)	(kPa)	(psi)
11R22.5	G/14	144/142L	19.6	8.25	1054	279	2800	6175	720	105	2650	5840	720	105
11R22.5	H/16	148/145L	19.6	8.25	1054	279	3150	6940	850	123	2900	6390	850	123
11R24.5	G/14	146/143L	20.6	8.25	1116	279	3000	6610	720	105	2725	6005	720	105
11R24.5	H/16	149/146L	20.6	8.25	1116	279	3250	7160	830	120	3000	6610	830	120

• Made in China • Made in Thailand



- New trailer winter tyre for severe weather conditions
- Maximized snow and ice grip with special tread compound and CAD tread pattern



● : Recommendable ● : Available

NZ787

Size	LR / PR	Service index	Tread Depth (mm)	Standard Rim	Overall Diameter (mm)	Section Width (mm)	Max. Load Capacity at Cold Inflation Pressure							
							Single				Dual			
							(kg)	(lbs)	(kPa)	(psi)	(kg)	(lbs)	(kPa)	(psi)
385/55R22.5	J/18	158L	16.0	11.75	1070	394	4250	9370	850	125	-	-	-	-
385/65R22.5	L/20	160K	16.0	11.75	1070	394	4500	9920	900	130	-	-	-	-

● Made in Thailand



- Wide tread provide stability while improving handling on wet and snowy road
- Extra deep tread depth provide long original tread life
- Open shoulder grooves deliver additional traction without compromising tread life
- 3D siping provide excellent traction and braking



● : Recommendable ● : Available

NZ788

Size	LR / PR	Service index	Tread Depth (mm)	Standard Rim	Overall Diameter (mm)	Section Width (mm)	Max. Load Capacity at Cold Inflation Pressure							
							Single				Dual			
							(kg)	(lbs)	(kPa)	(psi)	(kg)	(lbs)	(kPa)	(psi)
11R22.5	G/14	144/142L	21.6	8.25	1065	279	2800	6175	720	105	2650	5840	720	105
11R22.5	H/16	148/145L	21.6	8.25	1065	279	3150	6940	850	123	2900	6390	850	123
11R24.5	G/14	146/143L	21.6	8.25	1116	279	3000	6610	720	105	2725	6005	720	105
11R24.5	H/16	149/146L	21.6	8.25	1116	279	3250	7160	830	120	3000	6610	830	120
275/80R22.5	J/18	149/146L	20	8.25	1012	276	3250	7165	850	123	3000	6610	850	123

● Made in China ● Made in Thailand

Notes section with horizontal dashed lines for writing.



ZHONGCE RUBBER GROUP CO., LTD.



zc-rubber.com



facebook.com/zcrubber



twitter.com/zc_rubber



linkedin.com/company/zcrubber